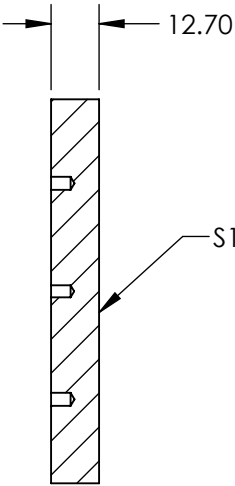
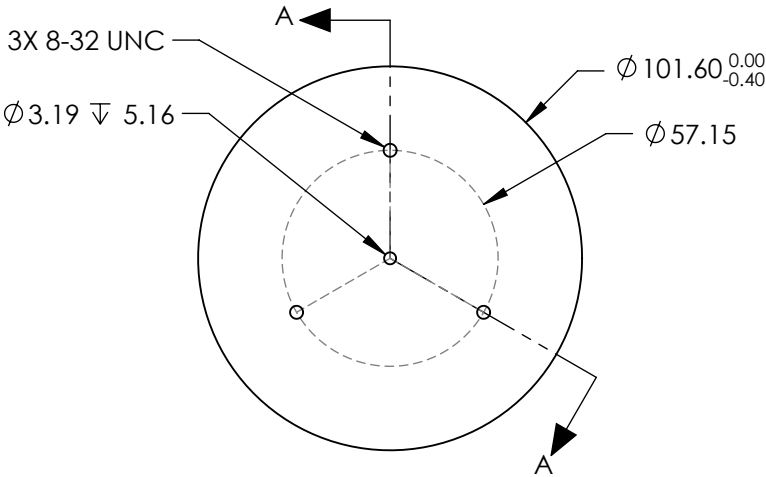


NOTES:

- 1. SUBSTRATE:  
Aluminum 6061-T6
- 2. COATING (APPLY ACROSS CLEAR APERTURE:  
S1 & S2: Protected Gold (700-12000nm)  
R(AVG) >94% @ 700 - 800nm  
R(AVG) >97% @ 800 - 2000nm  
R(AVG) >98% @ 2 - 12µm

SURFACE ROUGHNESS: <175Å

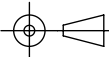

3. ROHS COMPLIANT



SECTION A-A

**FOR INFORMATION ONLY:  
DO NOT MANUFACTURE  
PARTS TO THIS DRAWING**

SPECIFICATIONS SUBJECT TO CHANGE WITHOUT NOTICE  
DIMENSIONS ARE FOR REFERENCE ONLY

	S1			 Edmund Optics®	
SHAPE	PLANO			TITLE	101.6mm Dia., Gold Coated, Aluminum Substrate Mirror
SURFACE QUALITY	80-50	ALL DIMS IN	mm	DWG NO	20155
CLEAR APERTURE	Ø 91.44				
SURFACE FLATNESS	λ/2 RMS			SHEET 1 OF 1	