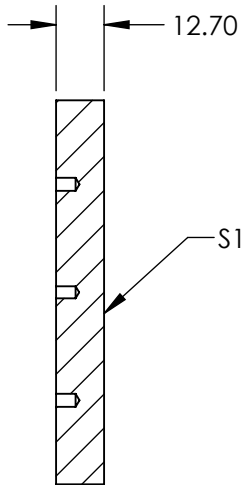
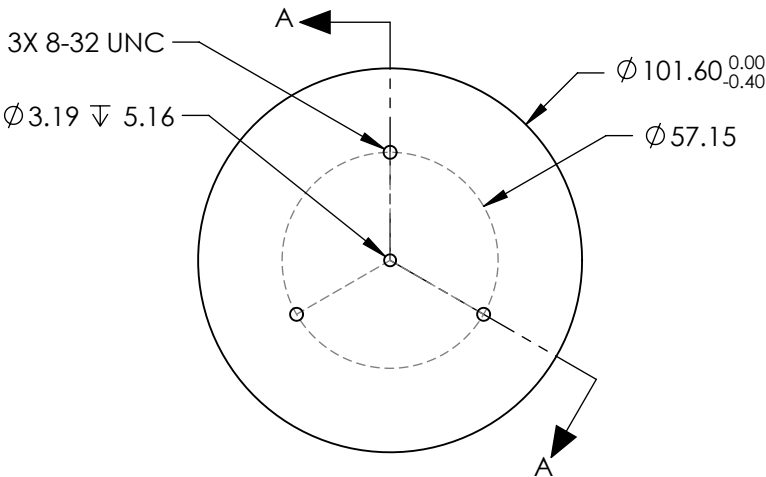


NOTES:  
1. SUBSTRATE:  
Aluminum 6061-T6

2. COATING (APPLY ACROSS CLEAR APERTURE:  
S1 & S2: Protected Aluminum (400-12000nm)  
R(AVG) >85% @ 400 - 700nm  
R(AVG) >70% @ 700 - 2000nm  
R(AVG) >97% @ 2 - 12µm

SURFACE ROUGHNESS: <175Å


3. ROHS COMPLIANT



SECTION A-A

**FOR INFORMATION ONLY:  
DO NOT MANUFACTURE  
PARTS TO THIS DRAWING**

SPECIFICATIONS SUBJECT TO CHANGE WITHOUT NOTICE  
DIMENSIONS ARE FOR REFERENCE ONLY

	S1	<div>THIRD ANGLE PROJECTION</div> 		<div>Edmund Optics®</div>		
SHAPE	PLANO			TITLE	101.6mm Dia., Aluminum Coated, Aluminum Substrate Mirror	
SURFACE QUALITY	80-50	ALL DIMS IN	mm	DWG NO	20154	SHEET 1 OF 1
CLEAR APERTURE	Ø 91.44					
SURFACE FLATNESS	λ/2 RMS					