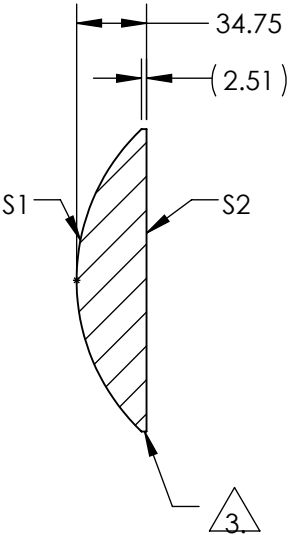
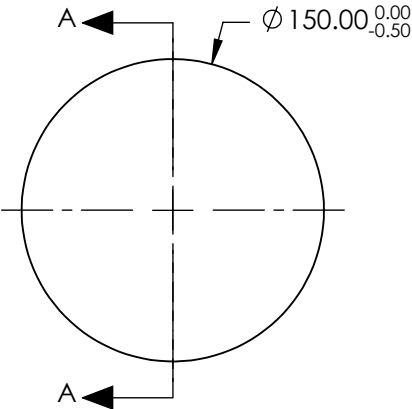
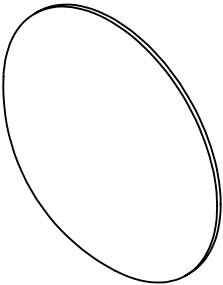


NOTES:

- 1. SUBSTRATE: N-BK7
- 2. COATING (APPLY ACROSS COATING APERTURE)  
S1 & S2: MgF2 (400-700nm)  
Ravg ≤ 1.75% @ 400 - 700nm

3. FINE GRINDE SURFACE

- 4. RoHS: COMPLIANT



SECTION A-A

**FOR INFORMATION ONLY:  
DO NOT MANUFACTURE  
PARTS TO THIS DRAWING**

SPECIFICATIONS SUBJECT TO CHANGE WITHOUT NOTICE  
DIMENSIONS ARE FOR REFERENCE ONLY

	S1	S2	EFL: 200.00	 <b>Edmund Optics®</b>		
SHAPE	CONVEX	PLANO	BFL: 177.09			
RADIUS	103.36	∞		TITLE	150mm Dia x 200mm Focal Length, MgF2 Coated, PCX Condenser Lens	
SURFACE QUALITY	120-80	120-80				
CLEAR APERTURE	Ø145.00	Ø145.00				
BEVEL	PROTECTIVE AS NEEDED	PROTECTIVE AS NEEDED	ALL DIMS IN	mm	DWG NO	19911
					SHEET 1 OF 1	