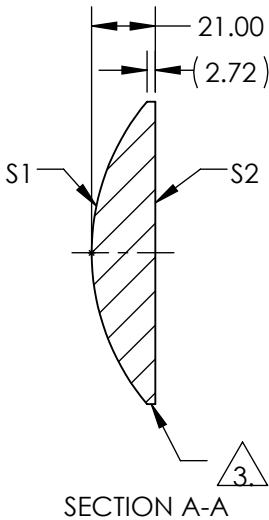
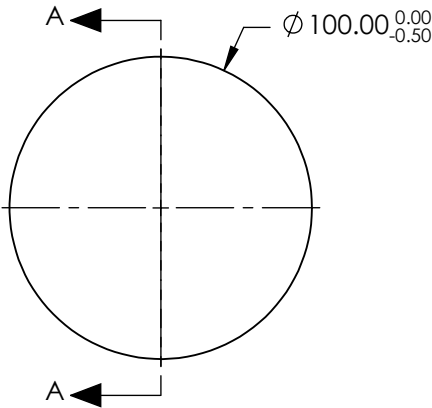
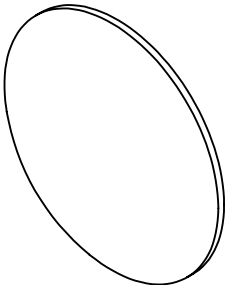


NOTES:

1. SUBSTRATE:
BK-7
2. COATING (APPLY ACROSS COATING APERTURE)
S1 & S2: MgF2 (400-700nm)
Ravg ≤ 1.75% @ 400 - 700nm


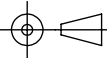
3. FINE GRIND SURFACE

4. RoHS: COMPLIANT



FOR INFORMATION ONLY:
DO NOT MANUFACTURE
PARTS TO THIS DRAWING

SPECIFICATIONS SUBJECT TO CHANGE WITHOUT NOTICE
DIMENSIONS ARE FOR REFERENCE ONLY

	S1	S2	EFL: 150.00	 Edmund Optics®		
SHAPE	CONVEX	PLANO	BFL: 136.16			
RADIUS	77.52	∞		TITLE	100mm Dia x 150mm Focal Length, MgF2 Coated, PCX Condenser Lens	
SURFACE QUALITY	120-80	120-80				
CLEAR APERTURE	Ø95.00	Ø95.00				
BEVEL	PROTECTIVE AS NEEDED	PROTECTIVE AS NEEDED	ALL DIMS IN	mm	DWG NO	19904
					SHEET 1 OF 1	