

NOTES:
1. SUBSTRATE:
FUSED SILICA

2. CLEAR APERTURE AND COATING APERTURE ARE
CENTERED ON SURFACE

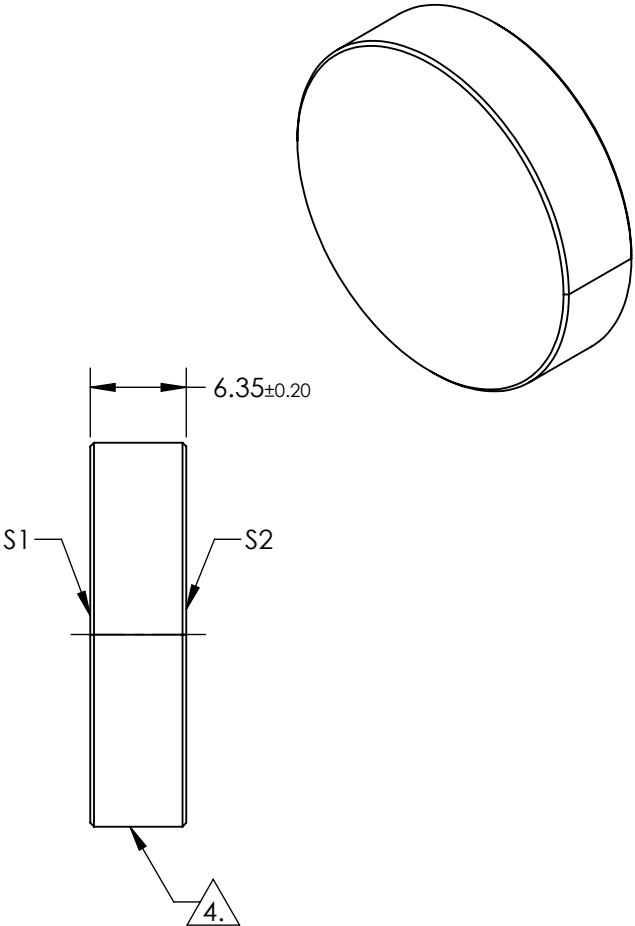
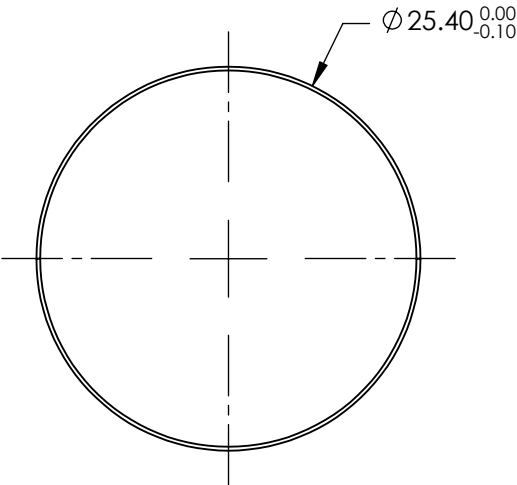
3. COATING (APPLY ACROSS CLEAR APERTURE)
S1:R(AVG) > 99.0% FROM 260-267nm AT 45° AOI
DAMAGE THRESHOLD,
PULSED: 2.5 J/cm², 20ns, 20 Hz @ 266 nm

S2: NONE

4. FINE GRIND SURFACE

5. SURFACE FLATNESS AND SURFACE QUALITY
SPECIFICATION APPLY ACROSS CLEAR APERTURE

6. ROHS COMPLIANT



FOR INFORMATION ONLY:
DO NOT MANUFACTURE
PARTS TO THIS DRAWING

SPECIFICATIONS SUBJECT TO CHANGE WITHOUT NOTICE
DIMENSIONS ARE FOR REFERENCE ONLY

	S1	S2
SHAPE	PLANO	PLANO
SURFACE FLATNESS	0.1 WAVE	N/A
SURFACE QUALITY	10-5	N/A
CLEAR APERTURE	Ø 21.59	Ø 21.59
BEVEL	PROTECTED AS NEEDED	PROTECTED AS NEEDED



ALL DIMS IN mm

EO® Edmund Optics®

TITLE 25.4mm Dia. 261.4nm 45°, Nd:YAG Laser Line Mirror

DWG NO 19736

SHEET 1 OF 1