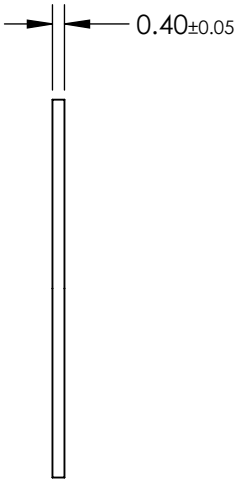
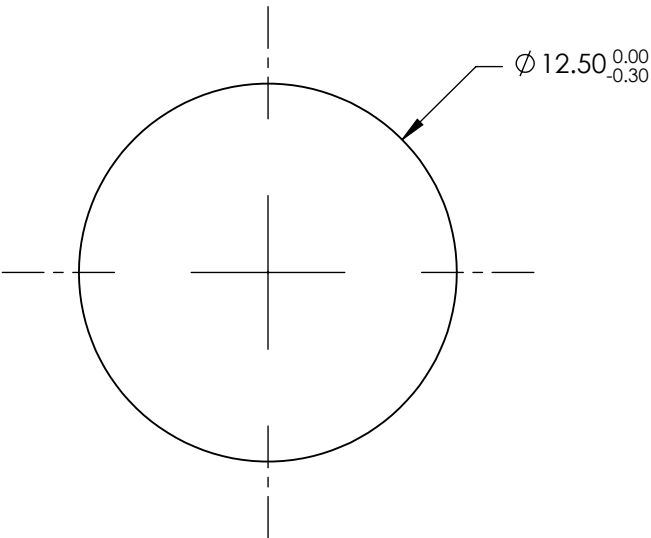
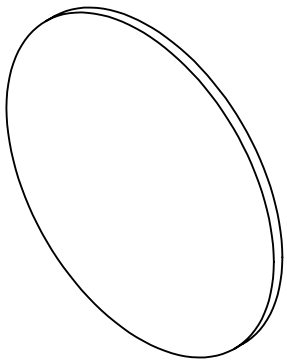


NOTES:

1. SUBSTRATE: POLYMER FILM XP42-40
2. OPERATING TEMPERATURE: -40 TO +80
3. WAVELENGTH RANGE: 400 - 700 nm
4. POLARIZATION: >99.98
5. TRANSMISSION (%):
SINGLE: 42 ± 2
PARALLEL: 36.4
CROSSED: <0.004
6. ROHS COMPLIANT



**FOR INFORMATION ONLY:
DO NOT MANUFACTURE
PARTS TO THIS DRAWING**

SPECIFICATIONS SUBJECT TO CHANGE WITHOUT NOTICE
DIMENSIONS ARE FOR REFERENCE ONLY

 **Edmund Optics®**

THIRD ANGLE PROJECTION 		TITLE	12.5mm Dia. Linear Polarizing Film (XP42-40)	
ALL DIMS IN	mm	DWG NO	19011	SHEET 1 OF 1