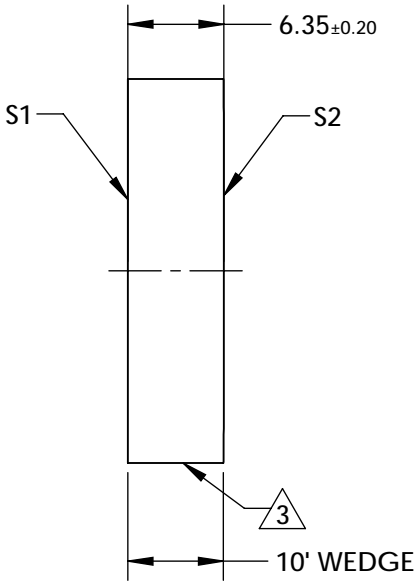
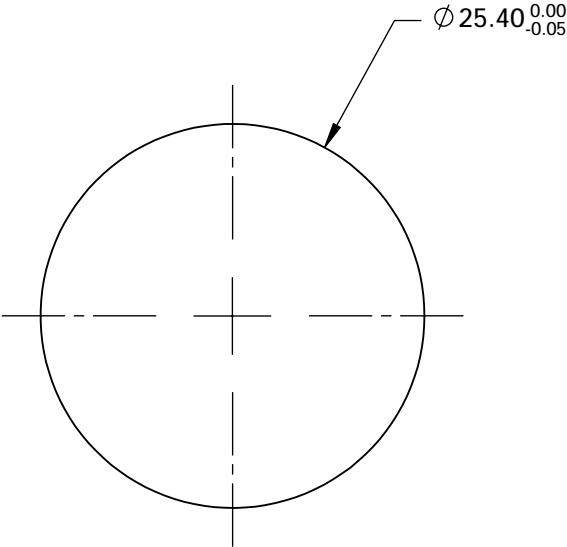


NOTES:

1. SUBSTRATE:
FUSED SILICA
2. COATING (APPLY ACROSS COATING APERTURE)
S1: R(AVG) >99.5% @ 1010 - 1050NM (5° AOI, P-POLARIZATION)
GOD: -1000FS² @ 1010 - 1050NM (5° AOI, P-POLARIZATION)
3. FINE GRIND SURFACE
4. ROHS COMPLIANT

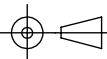


FOR INFORMATION ONLY:
DO NOT MANUFACTURE
PARTS TO THIS DRAWING

SPECIFICATIONS SUBJECT TO CHANGE WITHOUT NOTICE
DIMENSIONS ARE FOR REFERENCE ONLY

	S1	S2
SHAPE	PLANO	PLANO
IRREGULARITY AT 632.8nm	$\lambda/10$	N/A
CLEAR APERTURE	$\varnothing 20.32$	N/A
BEVEL	PROTECTED AS NEEDED	PROTECTED AS NEEDED

THIRD ANGLE
PROJECTION



ALL DIMS IN

mm



Edmund Optics®

TITLE

25.4MM DIA., 1030NM HIGHLY-DISPERSIVE
ULTRAFAST MIRROR WITH REDUCED THERMAL
LENSING

DWG NO

17070

SHEET
1 OF 1