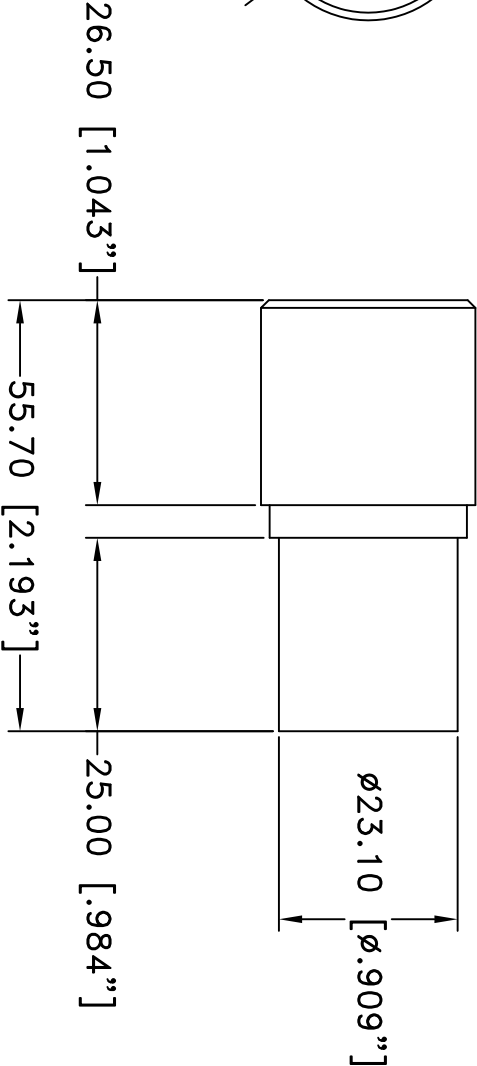
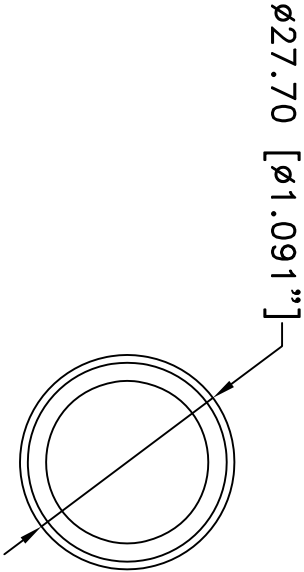


This drawing is for informational purposes only.  
No other rights or privileges are granted or implied.

REVISIONS				
ZONE	REV	DESCRIPTION	DATE	APPROVED



NOTE:  
1. F=18mm

ALL DIM ARE mm  
[inches] AND ARE FOR  
REFERENCE ONLY AND  
ARE SUBJECT TO  
CHANGE.

Date: 01/28/21 MB

Modified:

**INFINITY** Photo-Optical Company  
[www.infinity-usa.com](http://www.infinity-usa.com)

10x WIDEFIELD EYEPIECE

SIZE	FSCM NO.	DWG NO.	REV
A		312 518	-
SCALE	NONE	-	SHEET 1 OF 1