

NOTES:

1. SUBSTRATE:  
HOYA GLASS: ND-006
2. SURFACE S2 TO BE PARALLEL WITH SURFACE S1 TO WITHIN <0.02 mm

3. FINE GRIND SURFACE

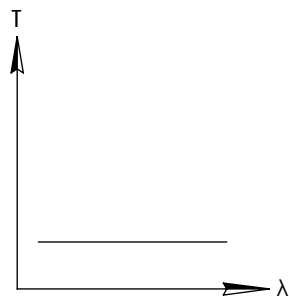
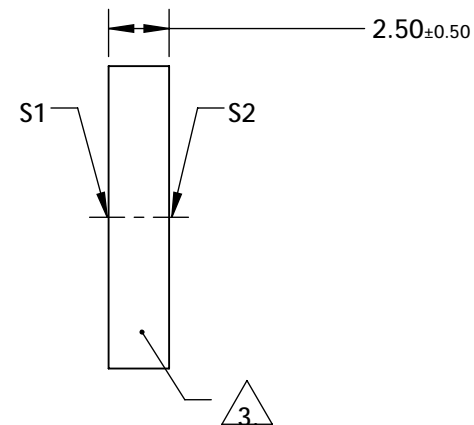
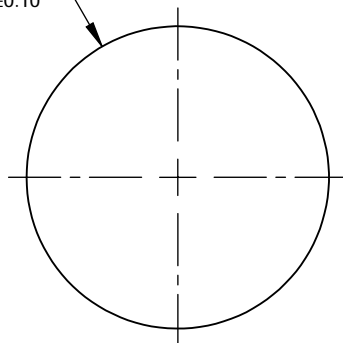
4. COATING SPECIFICATION:  
S1 & S2:R(ABS)  $\leq 1.5\%$  @ 750 - 800nm  
R(ABS)  $\leq 1.0\%$  @ 800 - 1550nm  
R(AVG)  $\leq 0.7\%$  @ 750 - 1550nm

5. OPTICAL DENSITY: 3.5 +/-0.2 @400-700nm

6. TRANSMISSION (%): 0.03% AVERAGE FROM 400-700nm

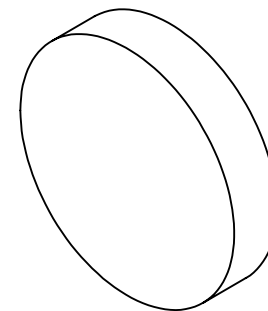
- ## 7. ROHS COMPLIANT

$\varnothing 12.50_{\pm 0.10}$




NEUTRAL DENSITY FILTER

**FOR INFORMATION ONLY:  
DO NOT MANUFACTURE  
PARTS TO THIS DRAWING**



SPECIFICATIONS SUBJECT TO CHANGE WITHOUT NOTICE  
DIMENSIONS ARE FOR REFERENCE ONLY



	S1	S2	THIRD ANGLE PROJECTION 		TITLE	3.5 OD, 12.5mm DIA., NIR II COATED, ABSORPTIVE ND FILTER	
SHAPE	PLANO	PLANO					
SURFACE QUALITY	80-50	80-50					
BEVEL	PROTECTIVE AS NEEDED	PROTECTIVE AS NEEDED	ALL DIMS IN	mm	DWG NO	13233	SHEET 1 OF 1