

**FOR INFORMATION ONLY:  
DO NOT MANUFACTURE  
PARTS TO THIS DRAWING**

NOTES:

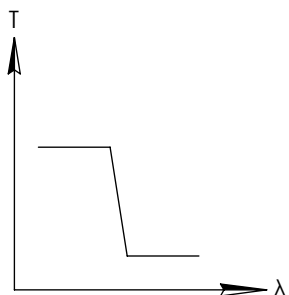
1. SUBSTRATE
2. SURFACE S2 TO BE PARALLEL WITH SURFACE S1 TO WITHIN 5 arcsec
3. COATING (APPLY ACROSS COATING APERTURE)  
PERFORMANCE SPECIFICATIONS:  
T(avg): >85% FROM 400 - 775nm FOR RANDOM POLARIZATION @ 45° AOI  
T(abs): >80% FROM 400 - 775nm FOR ALL POLARIZATIONS @ 45° AOI  
R(avg): >97% FROM 850 - 1050nm FOR RANDOM POLARIZATION @ 45° AOI  
R(abs): >95% FROM 850 - 1050nm FOR ALL POLARIZATIONS @ 45° AOI  
T(abs): = 50% 800nm @ 45° AOI

GDD:  $80 \pm 30\text{fs}^2$  @ 510 - 775nm  
 $120 \pm 80\text{fs}^2$  @ 400 - 775nm

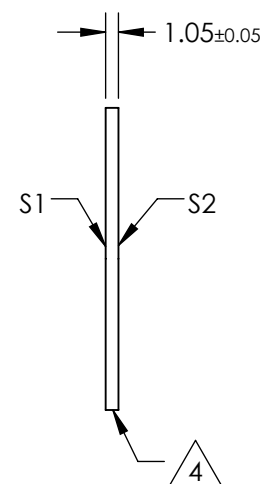
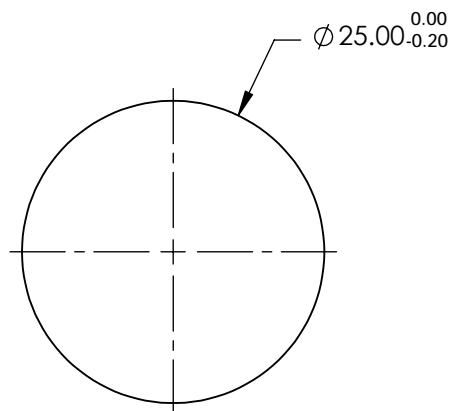
S1: HARD COATED  
S2: SINGLE LAYER MgF2

4. FINE GRIND SURFACE

5. POWER, IRREGULARITY, AND SURFACE QUALITY SPECIFICATIONS  
APPLY ACROSS CLEAR APERTURE
6. TRANSMITTED WAVEFRONT DISTORTION RMS@ 632.8nm  $\leq \frac{1}{4} \lambda$
7. ROHS COMPLIANT



SHORTPASS FILTER

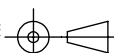


SPECIFICATIONS SUBJECT TO CHANGE WITHOUT NOTICE  
DIMENSIONS ARE FOR REFERENCE ONLY

	S1	S2
SHAPE	PLANO	PLANO
SURFACE QUALITY	40-20	40-20
CLEAR APERTURE	Ø22.00	Ø22.00
COATING APERTURE	Ø24.00	Ø24.00
BEVEL	PROTECTIVE AS NEEDED	PROTECTIVE AS NEEDED

**Edmund Optics®**

THIRD ANGLE  
PROJECTION



ALL DIMS IN

mm

TITLE

800nm, 25mm Diameter, Low GDD Dichroic  
Shortpass Ultrafast Filter

DWG NO

14004

SHEET  
1 OF 1