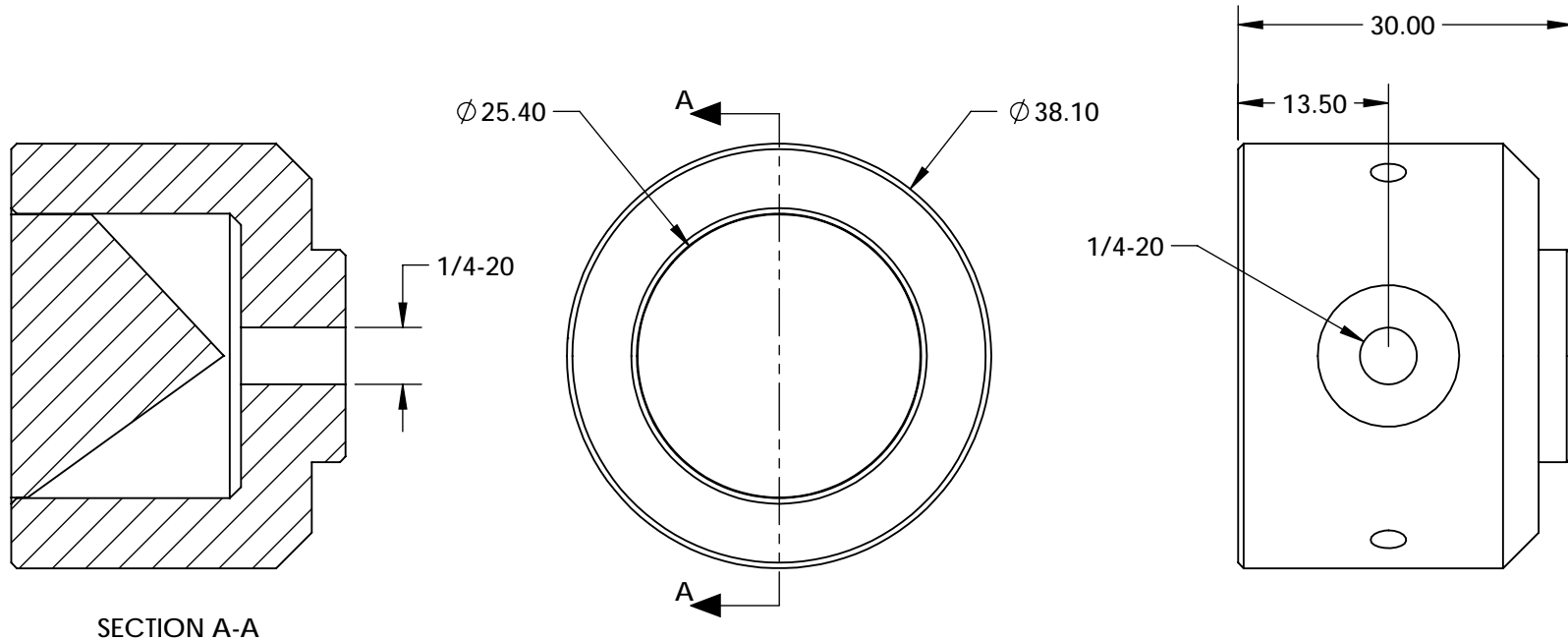


NOTES:

1. MATERIAL:
HOUSING: BLACK ANODIZED ALUMINUM
CORNER CUBE: N-BK7
2. COATING SPECIFICATION (APPLY ACROSS CLEAR APERTURE)
REFLECTIVE SURFACES: R(ABS) > 97% @ 400 - 2500nm @
0° AOI R(AVG) > 98% @ 400 - 2500nm @ 0° AOI
ENTRANCE: Rabs ≤ 1.5% @ 750 - 800nm
Rabs ≤ 1.0% @ 800 - 1550nm
Ravg ≤ 0.7% @ 750 - 1550nm
3. RoHS: COMPLIANT



SPECIFICATIONS SUBJECT TO CHANGE WITHOUT NOTICE
DIMENSIONS ARE FOR REFERENCE ONLY

**FOR INFORMATION ONLY:
DO NOT MANUFACTURE
PARTS TO THIS DRAWING**

Edmund Optics®

THIRD ANGLE PROJECTION 		TITLE	25.4mm SILVER AND NIR II COATED, MOUNTED CORNER CUBE RETROREFLECTOR	
ALL DIMS IN	mm	DWG NO	12672	SHEET 1 OF 1