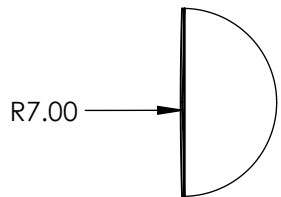
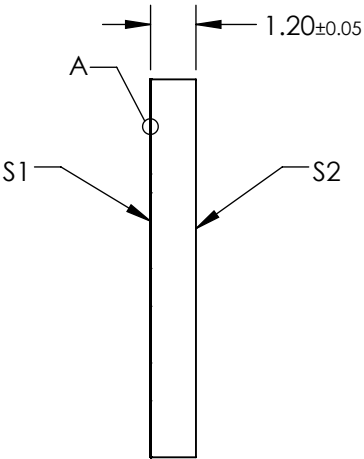
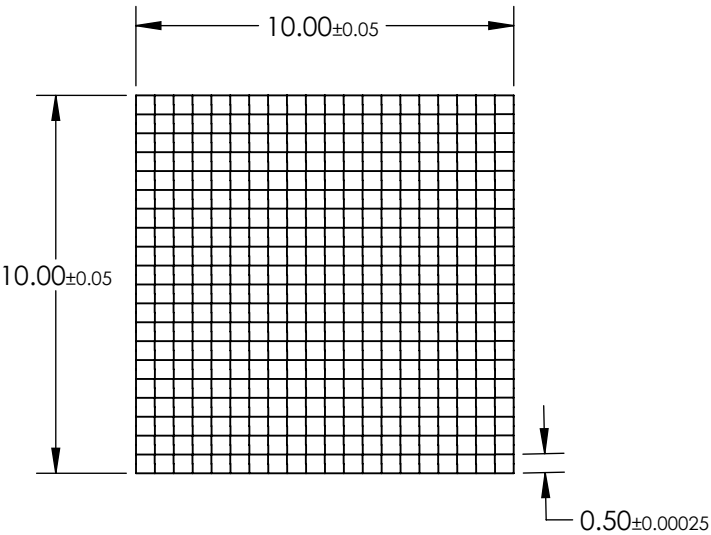


NOTES:

- 1. SUBSTRATE:
Fused Silica
- 2. COATING (APPLY ACROSS COATING APERTURE):
S1 & S2: NONE
- 3. EFFECTIVE FOCAL LENGTH: 15.30 mm
- 4. DIVERGENCE ANGLE: $\pm 1^\circ$
- 5. WAVELENGTH RANGE (nm): 200 - 2200
- 6. CLEAR APERTURE (mm): 9.00 x 9.00
- 7. ROHS: COMPLIANT


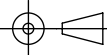


DETAIL A



SPECIFICATIONS SUBJECT TO CHANGE WITHOUT NOTICE
DIMENSIONS ARE FOR REFERENCE ONLY

**FOR INFORMATION ONLY:
DO NOT MANUFACTURE
PARTS TO THIS DRAWING**

 Edmund Optics®			
THIRD ANGLE PROJECTION 		TITLE	MicroLens Array 10 x 10mm, 500µm Pitch, 1° Divergence
ALL DIMS IN	mm	DWG NO	64480
			SHEET 1 OF 1