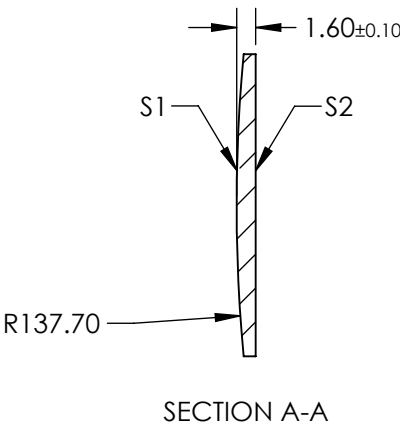
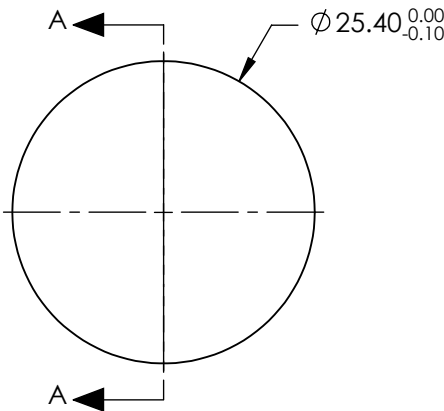


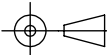
- NOTES:
- 1. SUBSTRATE: IR GRADE FUSED SILICA
 - 2. COATING:
S1 & S2: NONE
 - 3. CENTERING: < 3 ARCMIN
 - 4. RoHS: COMPLIANT

**FOR INFORMATION ONLY:
DO NOT MANUFACTURE
PARTS TO THIS DRAWING**



SPECIFICATIONS SUBJECT TO CHANGE WITHOUT NOTICE
DIMENSIONS ARE FOR REFERENCE ONLY

	S1	S2
SHAPE	CONVEX	PLANO
SURFACE QUALITY	20-10	20-10
CLEAR APERTURE	$\varnothing 22.86$	$\varnothing 22.86$
BEVEL	PROTECTIVE AS NEEDED	PROTECTIVE AS NEEDED

EFL: 300.35 mm		<div><div><div></div><div></div></div>[®] Edmund Optics[®]</div>		
BFL: 299.25 mm				
<div>THIRD ANGLE PROJECTION</div> <div></div>		TITLE	25.4mm Diameter x 300mm FL, Uncoated, IR Ultrafast Thin PCX Lens	
ALL DIMS IN	mm	DWG NO	11702	SHEET 1 OF 1