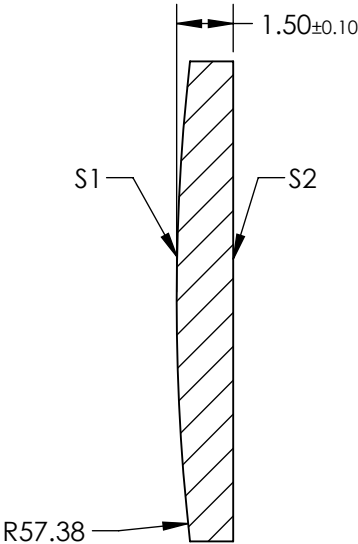
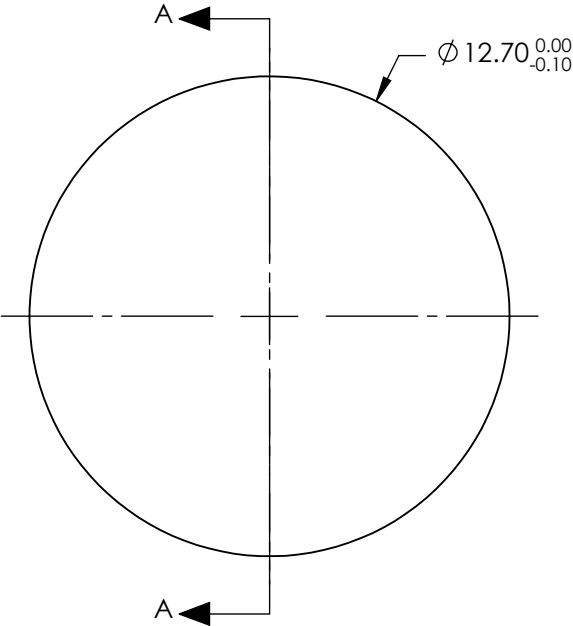


- NOTES:
- 1. SUBSTRATE: IR GRADE FUSED SILICA
 - 2. COATING:
S1 & S2: NONE
 - 3. CENTERING: < 3 ARCMIN
 - 4. RoHS: COMPLIANT


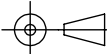
**FOR INFORMATION ONLY:
DO NOT MANUFACTURE
PARTS TO THIS DRAWING**



SECTION A-A

SPECIFICATIONS SUBJECT TO CHANGE WITHOUT NOTICE
DIMENSIONS ARE FOR REFERENCE ONLY

	S1	S2
SHAPE	CONVEX	PLANO
SURFACE QUALITY	20-10	20-10
CLEAR APERTURE	Ø11.43	Ø11.43
BEVEL	PROTECTIVE AS NEEDED	PROTECTIVE AS NEEDED

EFL: 125.16 mm		<div> Edmund Optics®</div>		
BFL: 124.13 mm				
<div>THIRD ANGLE PROJECTION</div> 		TITLE	12.7mm Diameter x 125mm FL, Uncoated, IR Ultrafast Thin PCX Lens	
ALL DIMS IN	mm	DWG NO	11695	SHEET 1 OF 1