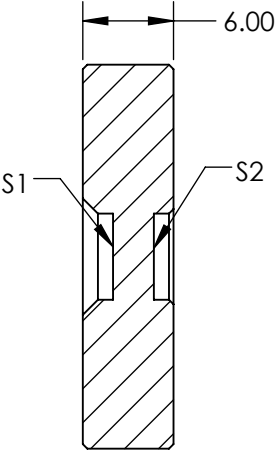
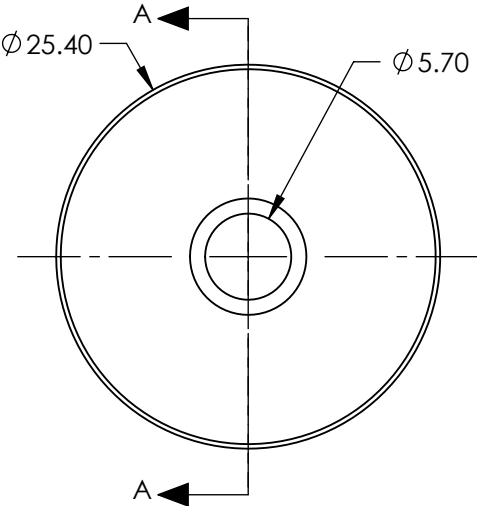
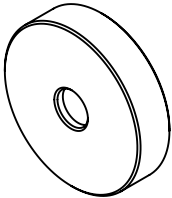


NOTES:

- 1. CRYSTAL TYPE: BBO
- 2. SURFACE S2 TO BE PARALLEL TO SURFACE S1 TO WITHIN <20 ARCSEC
- 3. COATING (APPLY ACROSS COATING APERTURE)  
DAMAGE THRESHOLD, PULSED: >1 GW/cm<sup>2</sup> @ 1064nm, 10ns  
S1: 515 & 1030nm PROTECTIVE COATING  
S2: 515 & 1030nm PROTECTIVE COATING
- 4. ORIENTATION (Θ/φ)°: 23.4/90
- 5. RoHS: COMPLIANT



SECTION A-A


**FOR INFORMATION ONLY:  
DO NOT MANUFACTURE  
PARTS TO THIS DRAWING**

SPECIFICATIONS SUBJECT TO CHANGE WITHOUT NOTICE  
DIMENSIONS ARE FOR REFERENCE ONLY

	S1	S2
SHAPE	PLANO	PLANO
SURFACE FLATNESS	λ/8	λ/8
SURFACE QUALITY	20-10	20-10
CLEAR APERTURE	Ø5.70	Ø5.70
BEVEL	PROTECTIVE AS NEEDED	PROTECTIVE AS NEEDED

THIRD ANGLE  
PROJECTION

ALL DIMS IN mm

 **Edmund Optics®**

TITLE	6 x 6 x 0.5mm, 1030nm SHG, TYPE I BBO NONLINEAR CRYSTAL		
DWG NO	11169	SHEET 1 OF 1	