

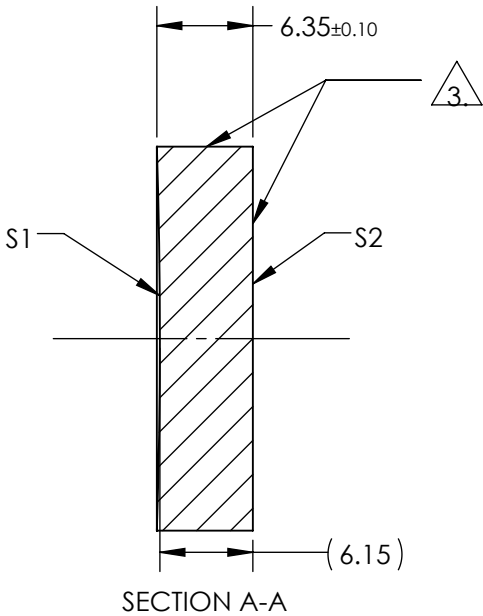
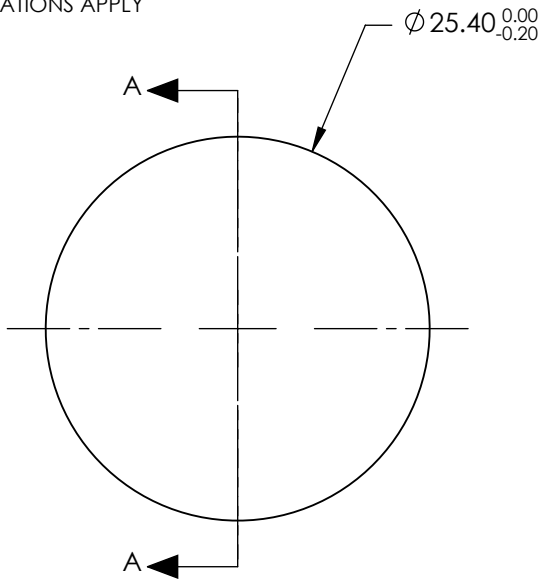
NOTES:

1. SUBSTRATE:  
Fused Silica
2. COATING (APPLY ACROSS COATING APERTURE)
- S1: Laser Mirror (355nm)  
R(ABS) >99.80% @ 355nm @ 0-45° AOI
- DAMAGE THRESHOLD,  
PULSED: 5 J/cm² @ 355 nm, 20ns, 20Hz
- S2: NONE

3. FINE GRIND SURFACE

4. POWER, IRREGULARITY, AND SURFACE QUALITY SPECIFICATIONS APPLY  
ACROSS CLEAR APERTURE
5. ROHS: COMPLIANT

**FOR INFORMATION ONLY:  
DO NOT MANUFACTURE  
PARTS TO THIS DRAWING**



|                         | S1                   | S2                   |
|-------------------------|----------------------|----------------------|
| SHAPE                   | CONCAVE              | PLANO                |
| RADIUS                  | 400.00               | INFINITY             |
| SURFACE QUALITY         | 20-10                | N/A                  |
| CLEAR APERTURE          | Ø22.86               | N/A                  |
| COATING APERTURE        | Ø22.86               | N/A                  |
| POWER AT 632.8nm        | 2 RINGS              | N/A                  |
| IRREGULARITY AT 632.8nm | 0.10 WAVE            | N/A                  |
| BEVEL                   | PROTECTIVE AS NEEDED | PROTECTIVE AS NEEDED |

SPECIFICATIONS SUBJECT TO CHANGE WITHOUT NOTICE  
DIMENSIONS ARE FOR REFERENCE ONLY

**Edmund Optics®**



ALL DIMS IN

mm

TITLE

25.4mm Dia. x 200mm EFL, 355nm 0-45°,  
Concave Laser Line Mirror

DWG NO

39958

SHEET  
1 OF 1