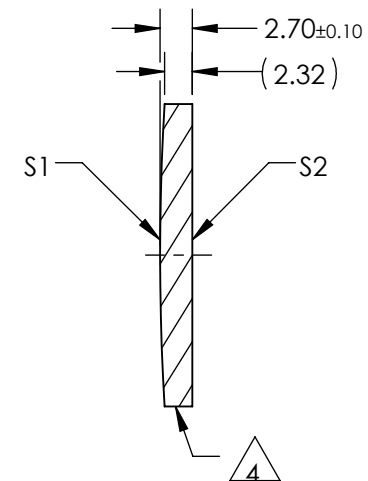
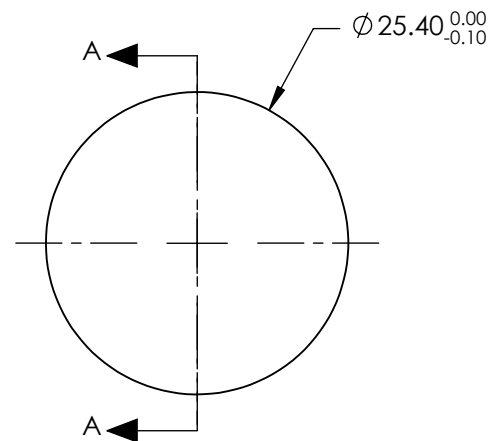


NOTES:


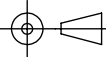
1. SUBSTRATE:  
II-VI Infrared ZnSe
2. CENTERING TOLERANCE:  
EDGE THICKNESS VARIATION MEASURED AT THE CLEAR APERTURE OF S1  
NOT TO EXCEED 12.7 $\mu$ m
3. COATING (APPLY ACROSS COATING APERTURE)  
BBAR (8000-12000nm)  
S1 & S2: R(AVG) <0.5% @ 8 - 12 $\mu$ m
4. FINE GROUND SURFACE
5. POWER, IRREGULARITY, AND SURFACE QUALITY SPECIFICATIONS APPLY  
ACROSS CLEAR APERTURE
6. WAVELENGTH RANGE: 8000 - 12000nm
7. SURFACE ROUGHNESS: <50 Å
8. ROHS: COMPLIANT

**FOR INFORMATION ONLY:  
DO NOT MANUFACTURE  
PARTS TO THIS DRAWING**



SECTION A-A

SPECIFICATIONS SUBJECT TO CHANGE WITHOUT NOTICE  
DIMENSIONS ARE FOR REFERENCE ONLY

	S1	S2				
SHAPE	CONVEX	PLANO				
RADIUS	210.40	INFINITY	EFL (AT 10.6 microns)	150.00	 <b>Edmund Optics®</b>	
SURFACE QUALITY	40-20	40-20	BFL (AT 10.6 microns)	148.88		
CLEAR APERTURE	90%	90%	THIRD ANGLE PROJECTION 		TITLE	25.4mm Dia. x 150mm FL, 8-12 $\mu$ m BBAR Coated, ZnSe Plano-Convex Lens
POWER at 10.6 $\mu$ m	$\lambda/10$	$\lambda/10$			DWG NO	39552
IRREGULARITY at 10.6 $\mu$ m	$\lambda/20$	$\lambda/20$	ALL DIMS IN	mm		SHEET 1 OF 1
BEVEL	PROTECTIVE AS NEEDED	PROTECTIVE AS NEEDED				