

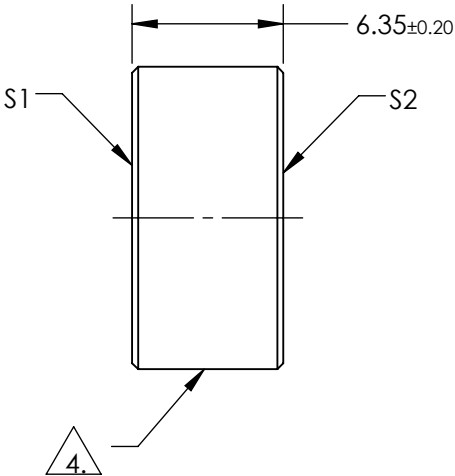
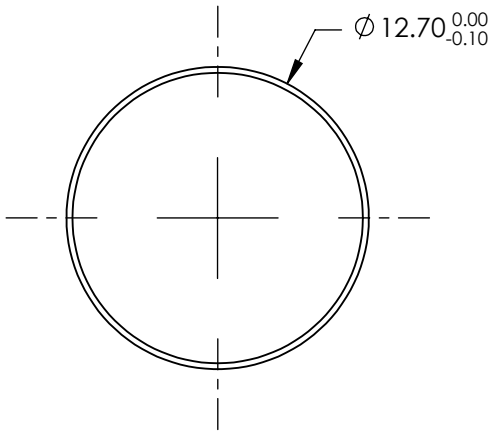
NOTES:

1. SUBSTRATE:
N-BK7
2. S2 TO BE PARALLEL TO S1 TO WITHIN <3 ARCMINS
3. COATING (APPLY ACROSS COATING APERTURE)
S1 & S2: R(ABS) < 0.25% @ 1030nm @ 0° AOI

DAMAGE THRESHOLD
PULSED: 15J/cm² @ 20ns, 20Hz @ 1030nm

4. FINE GROUND SURFACE

5. CLEAR APERTURE AND COATING APERTURE ARE CENTERED ON SURFACE
6. SURFACE QUALITY SPECIFICATIONS APPLY ACROSS CLEAR APERTURE
7. ROHS COMPLIANT

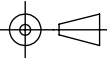


**FOR INFORMATION ONLY:
DO NOT MANUFACTURE
PARTS TO THIS DRAWING**

SPECIFICATIONS SUBJECT TO CHANGE WITHOUT NOTICE
DIMENSIONS ARE FOR REFERENCE ONLY

| | S1 | S2 |
|--------------------|----------------------|----------------------|
| SHAPE | PLANO | PLANO |
| SURFACE QUALITY | 10-5 | 10-5 |
| SURFACE FLATNESS | $\lambda/10$ | $\lambda/10$ |
| MIN CLEAR APERTURE | $\varnothing 11.43$ | $\varnothing 11.43$ |
| BEVEL | PROTECTIVE AS NEEDED | PROTECTIVE AS NEEDED |

THIRD ANGLE
PROJECTION



ALL DIMS IN

mm



Edmund Optics®

TITLE

$\varnothing 12.7\text{mm} \times 6.35\text{mm}$ 1030nm N-BK7 LASER
WINDOW

DWG NO

39712

SHEET
1 OF 1