

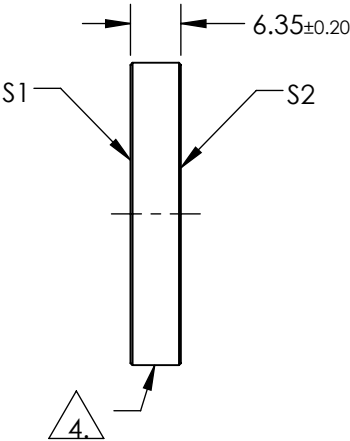
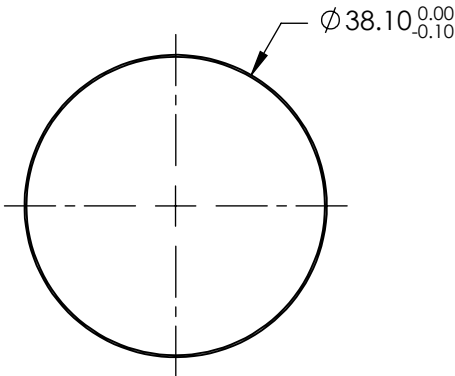
NOTES:

- 1. SUBSTRATE:  
FUSED SILICA
- 2. S2 TO BE PARALLEL TO S1 TO WITHIN <3 ARCMINS
- 3. COATING (APPLY ACROSS COATING APERTURE)  
S1 & S2: R(ABS) < 0.25% @ 1080nm @ 0° AOI

DAMAGE THRESHOLD  
PULSED: 15J/cm² @ 20ns, 20Hz @ 1080nm

4. FINE GROUND SURFACE

- 5. CLEAR APERTURE AND COATING APERTURE ARE CENTERED ON SURFACE
- 6. SURFACE QUALITY SPECIFICATIONS APPLY ACROSS CLEAR APERTURE
- 7. ROHS COMPLIANT




**FOR INFORMATION ONLY:  
DO NOT MANUFACTURE  
PARTS TO THIS DRAWING**

SPECIFICATIONS SUBJECT TO CHANGE WITHOUT NOTICE  
DIMENSIONS ARE FOR REFERENCE ONLY

	S1	S2
SHAPE	PLANO	PLANO
SURFACE QUALITY	10-5	10-5
SURFACE FLATNESS	$\lambda/10$	$\lambda/10$
MIN CLEAR APERTURE	Ø34.29	Ø34.29
BEVEL	PROTECTIVE AS NEEDED	PROTECTIVE AS NEEDED

THIRD ANGLE  
PROJECTION

ALL DIMS IN      mm

 **Edmund Optics®**

TITLE	Ø38.1mm x 6.35mm 1080nm FS LASER WINDOW	
DWG NO	11402	SHEET 1 OF 1