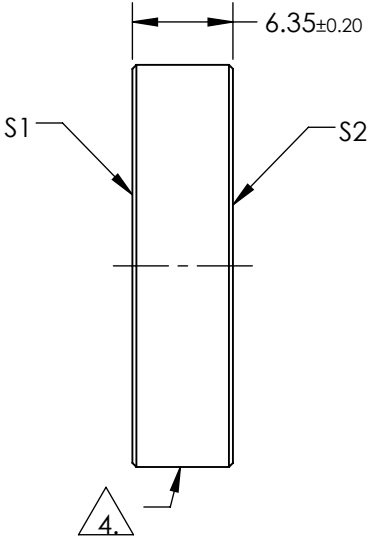
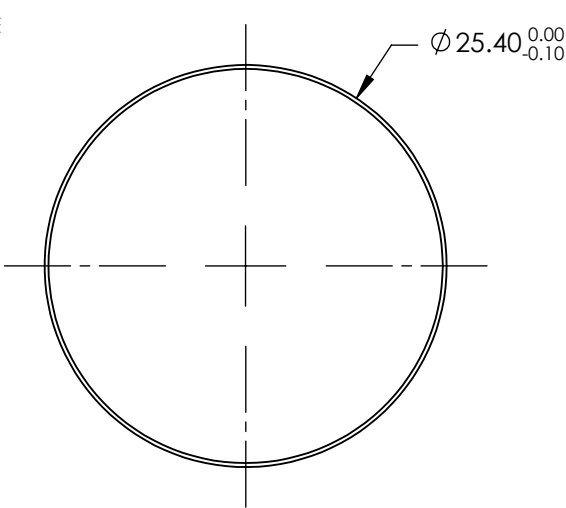


NOTES:

- 1. SUBSTRATE:
FUSED SILICA
- 2. S2 TO BE PARALLEL TO S1 TO WITHIN <3 ARCMINS
- 3. COATING (APPLY ACROSS COATING APERTURE)
S1 & S2: R(ABS) < 0.25% @ 1080nm @ 0° AOI
DAMAGE THRESHOLD
PULSED: 15J/cm² @ 20ns, 20Hz @ 1080nm


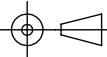
4. FINE GROUND SURFACE

- 5. CLEAR APERTURE AND COATING APERTURE ARE CENTERED ON SURFACE
- 6. SURFACE QUALITY SPECIFICATIONS APPLY ACROSS CLEAR APERTURE
- 7. ROHS COMPLIANT



**FOR INFORMATION ONLY:
DO NOT MANUFACTURE
PARTS TO THIS DRAWING**

SPECIFICATIONS SUBJECT TO CHANGE WITHOUT NOTICE
DIMENSIONS ARE FOR REFERENCE ONLY

	S1	S2	 Edmund Optics®			
SHAPE	PLANO	PLANO		TITLE	Ø25.4mm x 6.35mm 1080nm FS LASER WINDOW	
SURFACE QUALITY	10-5	10-5		DWG NO	11400	
SURFACE FLATNESS	λ/10	λ/10				
MIN CLEAR APERTURE	Ø22.86	Ø22.86				
BEVEL	PROTECTIVE AS NEEDED	PROTECTIVE AS NEEDED	ALL DIMS IN	mm	SHEET 1 OF 1	