

NOTES:

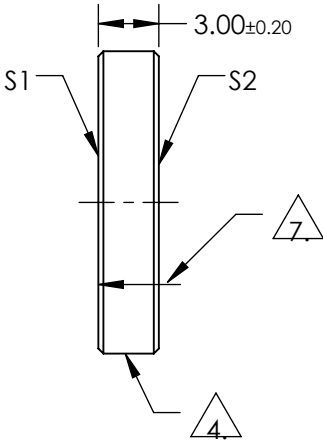
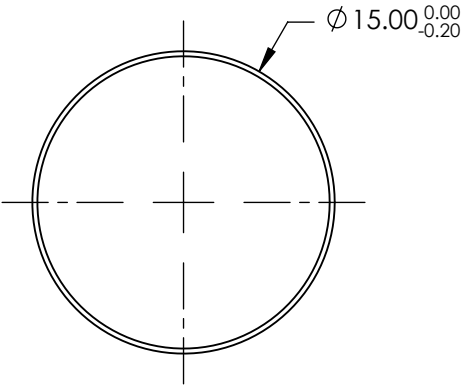
- 1. SUBSTRATE:  
ZERODUR
- 2. S2 TO BE PARALLEL TO S1 TO WITHIN <30 ARCSEC
- 3. COATING (APPLY ACROSS COATING APERTURE)  
S1: PROTECTED SILVER  
R(AVG) > 98% FROM 450-2000nm @ 0° AOI  
R(AVG) > 98% FROM 2000-10000nm @ 0° AOI
- S2: NONE

4. FINE GROUND SURFACE

- 5. CLEAR APERTURE AND COATING APERTURE ARE CENTERED ON SURFACE
- 6. SURFACE QUALITY SPECIFICATIONS APPLY ACROSS CLEAR APERTURE

7. ARROW ON EDGE POINTS TOWARDS 1/10TH WAVE SURFACE S1

- 8. ROHS: COMPLIANT



**FOR INFORMATION ONLY:  
DO NOT MANUFACTURE  
PARTS TO THIS DRAWING**

SPECIFICATIONS SUBJECT TO CHANGE WITHOUT NOTICE  
DIMENSIONS ARE FOR REFERENCE ONLY

	S1	S2
SHAPE	PLANO	PLANO
SURFACE QUALITY	20-10	COMMERCIAL POLISH
SURFACE FLATNESS	0.10 WAVE	N/A
CLEAR APERTURE	Ø13.50	N/A
COATING APERTURE	Ø14.40	N/A
BEVEL	PROTECTIVE AS NEEDED	PROTECTIVE AS NEEDED

THIRD ANGLE  
PROJECTION

ALL DIMS IN      mm

 **Edmund Optics®**

TITLE	MIRROR 1/10 WV ZDUR SILVER 15 DIA		
DWG NO	39876	SHEET 1 OF 1	