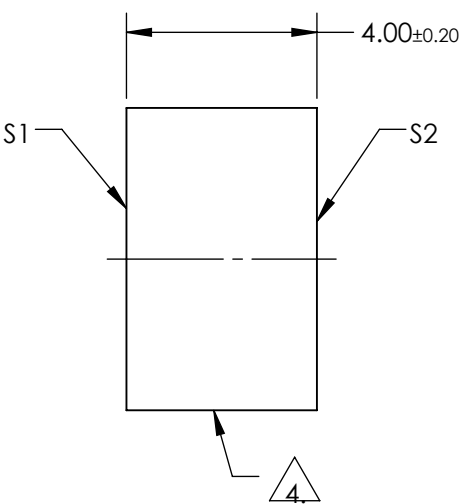
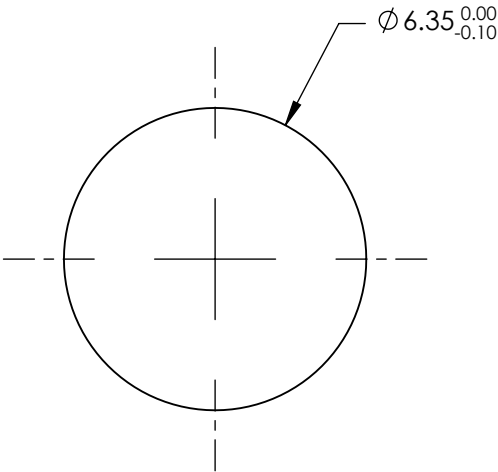





NOTES:

- 1. SUBSTRATE:  
FUSED SILICA
- 2. SURFACE S2 TO BE PARALLEL TO S1 TO WITHIN <3 ARCMIN
- 3. COATING (APPLY ACROSS COATING APERTURE)  
S1 & S2: NONE
- 4. FINE GRIND SURFACE
- 5. ROHS COMPLIANT



**FOR INFORMATION ONLY:  
DO NOT MANUFACTURE  
PARTS TO THIS DRAWING**

SPECIFICATIONS SUBJECT TO CHANGE WITHOUT NOTICE  
DIMENSIONS ARE FOR REFERENCE ONLY

	S1	S2	 Edmund Optics®				6.35x4 LASER MIRROR SUBSTRATE	
SHAPE	PLANO	PLANO						
SURFACE ACCURACY P-V AT 632.8nm	λ/10	N/A						
SURFACE QUALITY	10-5	COMMERCIAL POLISH		TITLE	DWG NO		37705	
CLEAR APERTURE	Ø5.40	N/A						
BEVEL	PROTECTIVE AS NEEDED	PROTECTIVE AS NEEDED	ALL DIMS IN	mm	SHEET 1 OF 1			