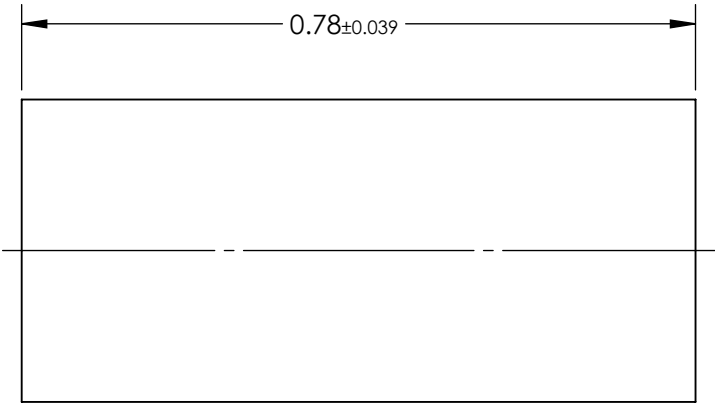
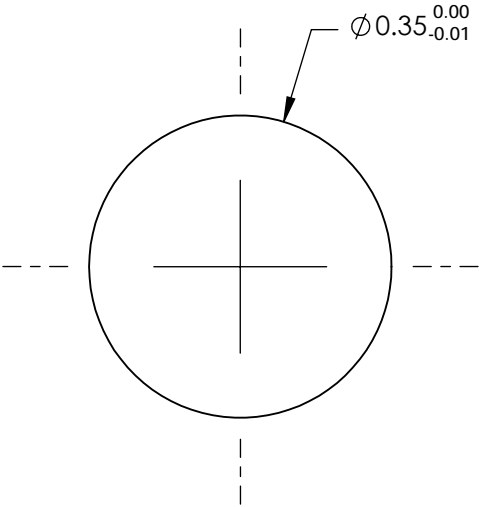


NOTES:


- 1. SUBSTRATE:
Alumoscilate Glass Embedded with Silver Ions
- 2. COATING (APPLY ACROSS COATING APERTURE)
S1 & S2: Uncoated
- 3. EFL: 0.3
- 4. f/# : 0.96
- 5. NUMERICAL APERTURE: 0.55
- 6. DESIGN WAVELENGTH: 810nm
- 7. WORKING DISTANCE: 0mm ±0.02
- 8. ROHS: COMPLIANT



**FOR INFORMATION ONLY:
DO NOT MANUFACTURE
PARTS TO THIS DRAWING**

SPECIFICATIONS SUBJECT TO CHANGE WITHOUT NOTICE
DIMENSIONS ARE FOR REFERENCE ONLY

EO® Edmund Optics®

	S1	S2	<div>THIRD ANGLE PROJECTION</div> 		TITLE	0.35mm Dia, 800nm, 0.0mm WD, Uncoated, GRIN Lens	
SHAPE	PLANO	PLANO					
SURFACE QUALITY	40-20	40-20	<div>ALL DIMS IN</div> <div>mm</div>		DWG NO	88355	SHEET 1 OF 1
CLEAR APERTURE	Ø0.32	Ø0.32					