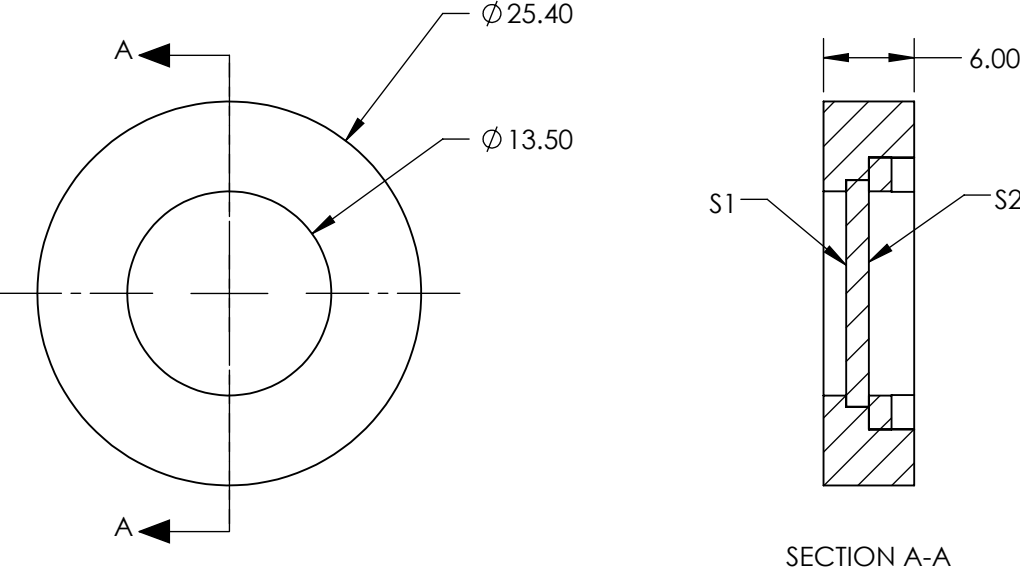


- NOTES:
1. SUBSTRATE:
MgF2
 2. SURFACE S1 TO BE PARALLEL TO SURFACE S2 TO WITHIN <3 ARCMINS
 3. RETARDANCE: $\lambda/4 \pm \lambda/100$ @ 20°C
 4. DESIGN WAVELENGTH: 3000nm
 5. TRANSMITTED WAVEFRONT: $<\lambda/8$ @ 632.8nm
 6. CONSTRUCTION: Crystalline
 7. ROHS: NOT COMPLIANT



SPECIFICATIONS SUBJECT TO CHANGE WITHOUT NOTICE
DIMENSIONS ARE FOR REFERENCE ONLY

**FOR INFORMATION ONLY:
DO NOT MANUFACTURE
PARTS TO THIS DRAWING**

Edmund Optics®

	S1	S2					
CLEAR APERTURE	Ø10.0	Ø10.0	ALL DIMS IN	mm	DWG NO	85110	SHEET 1 OF 1