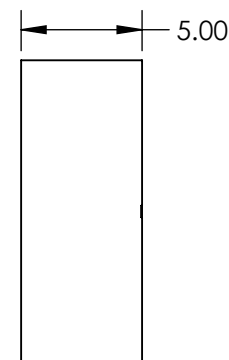
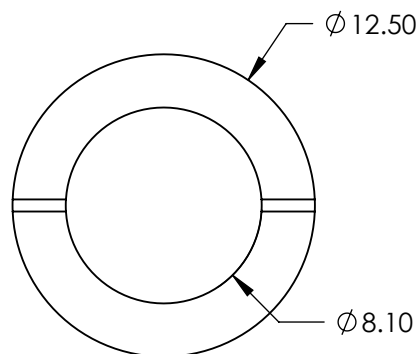
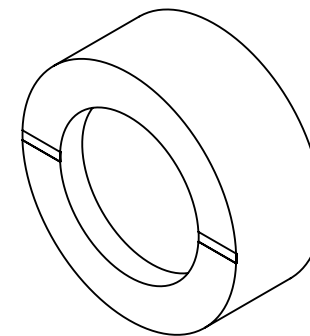


NOTES:

1. SUBSTRATE: Soda Lime Float Glass
2. CONSTRUCTION: Nanoparticle
3. CONTRAST:
  - > 1,000:1 (1500-5000nm)
  - > 10,000:1 (2000-4500nm)
4. BEAM DEVIATION: < 1 ARCMIN
5. MINIMUM TRANSMISSION (%):
  - 35 (1500-5000nm)
  - 65 (2000-4500nm)
6. LASER DAMAGE THRESHOLD
  - 1 W/cm<sup>2</sup> FOR CONTINUOUS BLOCK
  - 5 W/cm<sup>2</sup> FOR CONTINUOUS PASS
7. TRANSMITTED WAVEFRONT DISTORTION:
  - <  $\lambda/4$  OVER A Ø10mm INSPECTION AREA
8. OPERATING TEMPERATURE (°C):
  - 20 to +120

**FOR INFORMATION ONLY:  
DO NOT MANUFACTURE  
PARTS TO THIS DRAWING**



SPECIFICATIONS SUBJECT TO CHANGE WITHOUT NOTICE  
DIMENSIONS ARE FOR REFERENCE ONLY

WAVELENGTH RANGE (nm)	1500 - 5000
EXTINCTION RATIO	10000:1
SURFACE QUALITY	60-40
ACCEPTANCE ANGLE (°)	±20
POLARIZATION AXIS MARK (%)	±2
RoHS	COMPLIANT



ALL DIMS IN mm

**EO**® **Edmund Optics**®

TITLE

12.5mm Diameter Mid-Wave Infrared  
Polarizer

DWG NO

85262

SHEET  
1 OF 1