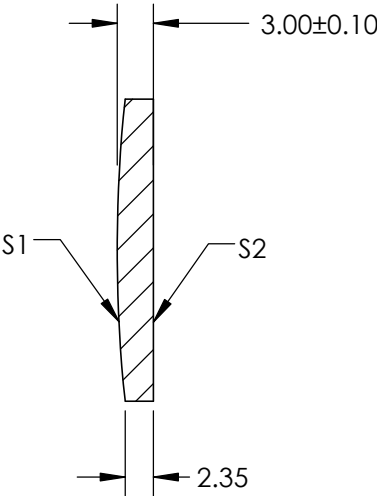
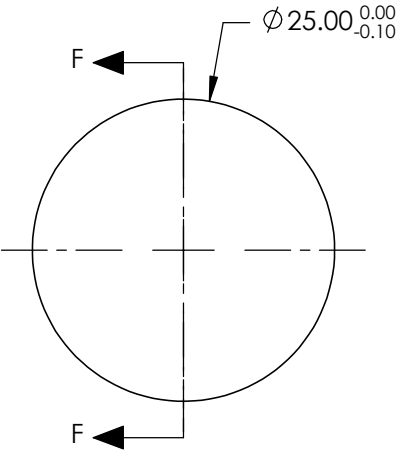



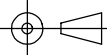
NOTES:

- 1. SUBSTRATE: GERMANIUM (GE)
- 2. COATING (APPLY ACROSS COATING APERTURE)  
S1: R(avg) <3.0% @ 8 - 12µm  
S2: R(avg) <3.0% @ 8 - 12µm
- 3. EDGES DIAMOND TURNED
- 4. CENTERING: <3 ARCMIN
- 5. RoHS COMPLIANT



SECTION F-F

**FOR INFORMATION ONLY:  
DO NOT MANUFACTURE  
PARTS TO THIS DRAWING**

	S1	S2	SPECIFICATIONS SUBJECT TO CHANGE WITHOUT NOTICE DIMENSIONS ARE FOR REFERENCE ONLY			
SHAPE	CONVEX	PLANO	EFL @ 10.6µm	40	 <b>Edmund Optics®</b>	
RADIUS	120.16	∞	BFL @ 10.6µm	39.25		
SURFACE QUALITY	60-40	60-40			TITLE	25mm DIA. X 40mm FL, 8 - 12µm COATED, GE PLANO-CONVEX LEN
CLEAR APERTURE	Ø24	Ø24			DWG NO	69664
BEVEL	PROTECTIVE AS NEEDED	PROTECTIVE AS NEEDED	ALL DIMS IN	mm		SHEET 1 OF 1