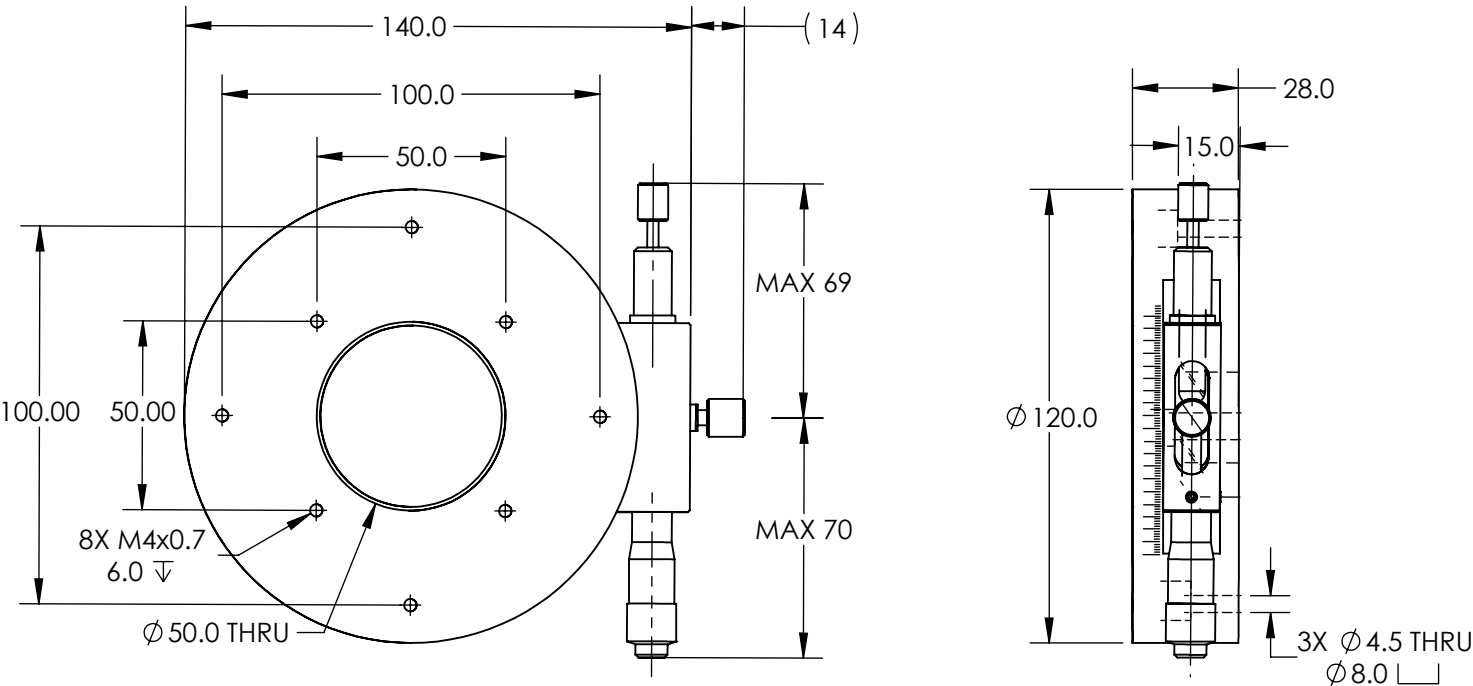


NOTES:

- 1. TRAVEL: COARSE ROTATION 360° / FINE ROTATION ± 5°
- 2. INCLUDES ONE PACKAGE OF (3) M4x20 LONG, FLAT POINT SET SCREWS FOR LOCKING



SPECIFICATIONS SUBJECT TO CHANGE WITHOUT NOTICE
DIMENSIONS ARE FOR REFERENCE ONLY

**FOR INFORMATION ONLY:
DO NOT MANUFACTURE
PARTS TO THIS DRAWING**

Edmund Optics®

| | | | | |
|------------------------|----|--------|-------------------------------|--------------|
| THIRD ANGLE PROJECTION | | TITLE | 120MM DIA METRIC ROTARY STAGE | |
| ALL DIMS IN | mm | DWG NO | 62295 | SHEET 1 OF 1 |