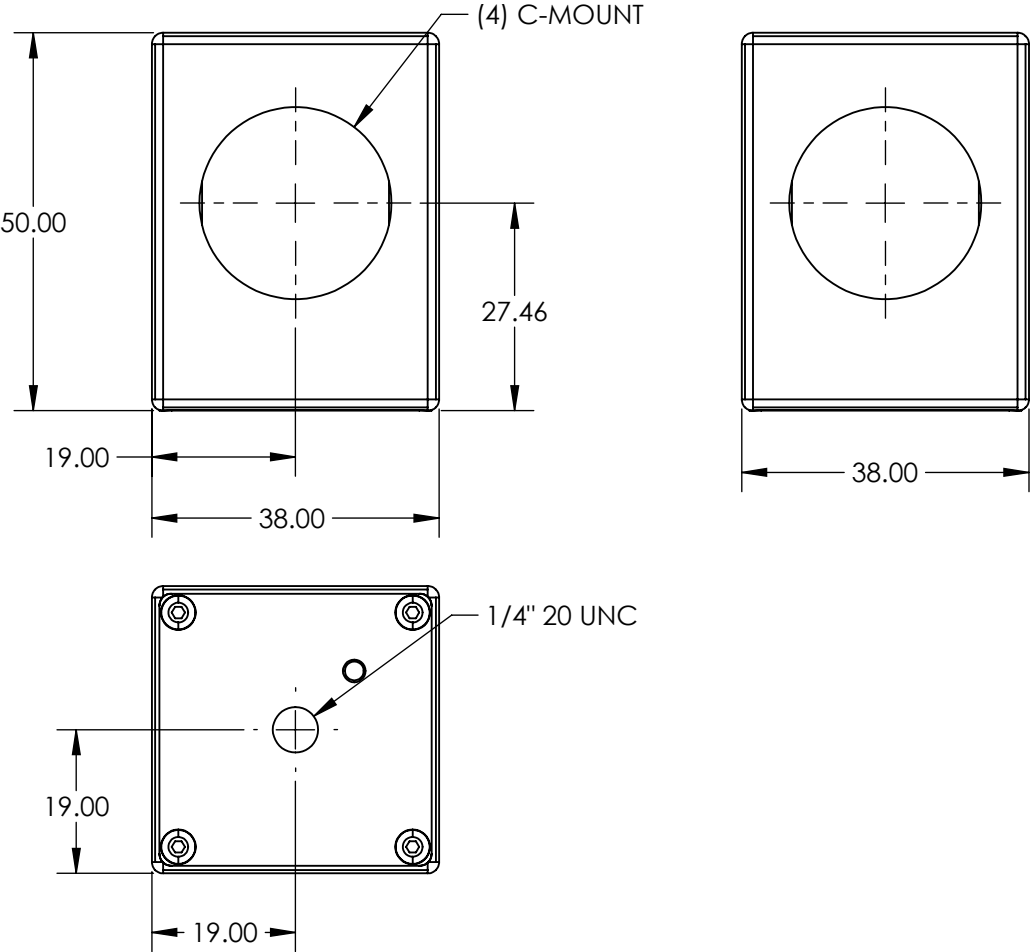


NOTES:

1. SUBSTRATE:  
N-BK7
2. COATING (APPLY ACROSS COATING APERTURE)  
ANGLE OF INCIDENCE: 45.00 °  
S1: Multi-Layer Dichroic  
R(ABS) = 99.7% @ 535nm  
R(AVG) >98% from 520 - 555nm
- S2: Single Layer MgF2  
1/4 WAVE MgF2 @ 550nm
- WAVELENGTH TOLERANCE (nm): ±15
3. TRANSMISSION WAVELENGTH (nm): 600 - 800



**FOR INFORMATION ONLY:  
DO NOT MANUFACTURE  
PARTS TO THIS DRAWING**

SPECIFICATIONS SUBJECT TO CHANGE WITHOUT NOTICE  
DIMENSIONS ARE FOR REFERENCE ONLY

**Edmund Optics®**

|                  |            |            |                        |    |        |   |              |
|------------------|------------|------------|------------------------|----|--------|---|--------------|
|                  | S1         | S2         | THIRD ANGLE PROJECTION |    | TITLE  | 45° Green Dichroic Filter Mounted in C-Mount Cube |              |
| SURFACE QUALITY  | 60-40      | 60-40      |                        |    |        |   |              |
| SURFACE FLATNESS | 0.25 WAVES | 0.25 WAVES | ALL DIMS IN            | mm | DWG NO | 49692   | SHEET 1 OF 1 |