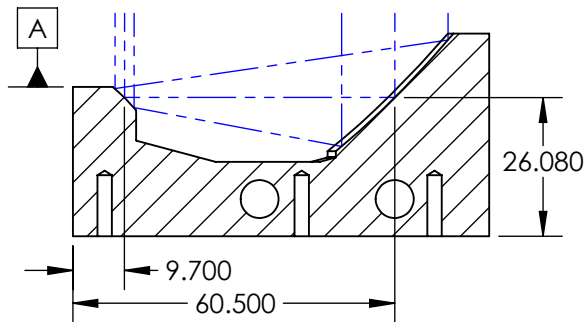
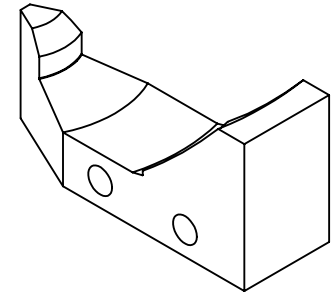
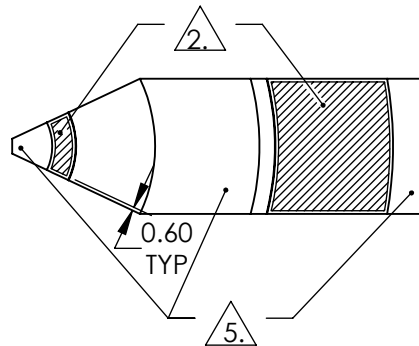


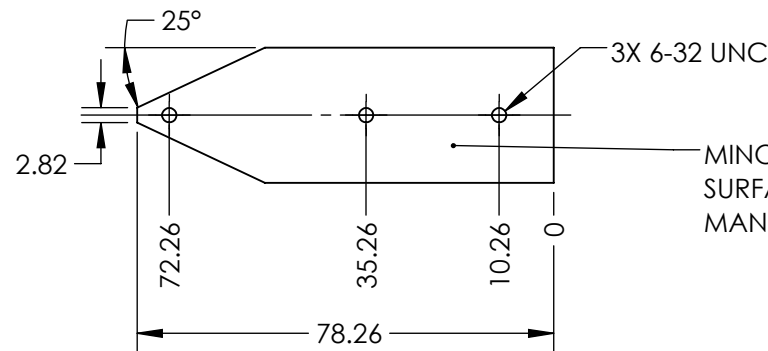
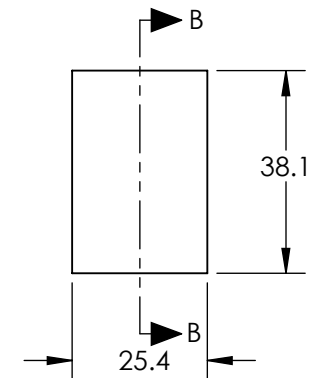
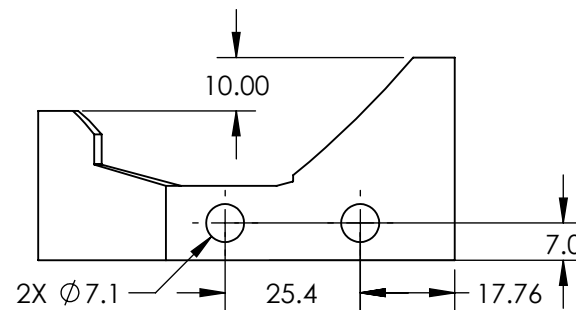
NOTES:

1. SUBSTRATE: ALUMINUM 6061-T6
2. COATING
UV ENHANCED ALUMINUM

R(AVG) > 89% FROM 250-450nm
R(AVG) > 85% FROM 2,000-10,000nm
3. SURFACE ROUGHNESS: <50 Å RMS
4. SYSTEM SHALL BE ALIGNED TO DATUM A WITH
REFLECTED WAVEFRONT ERROR OF $\leq 1/8$ WAVE
AT 632.8 nm FOR $\varnothing 1$ mm INPUT BEAM.
5. INTEGRATED ALIGNMENT FLAT
6. OPTICAL CENTER LINE
7. RoHS COMPLIANT



SECTION B-B
OPTICAL CENTER LINE



MINOR SCRATCHES ON THE NON-OPTICAL
SURFACE MIGHT BE PRESENT DUE TO THE
MANUFACTURING PROCESS.

**FOR INFORMATION ONLY:
DO NOT MANUFACTURE
PARTS TO THIS DRAWING**

SPECIFICATIONS SUBJECT TO
CHANGE WITHOUT NOTICE
DIMENSIONS ARE FOR
REFERENCE ONLY

EO® Edmund Optics®

REV. A	S1
SHAPE	MONOLITHIC
BEVEL	PROTECTIVE AS NEEDED

THIRD ANGLE PROJECTION		TITLE	5X, UV Enhanced Aluminum Canopus™ Reflective Beam Expander	
		DWG NO	37188	SHEET 1 OF 1