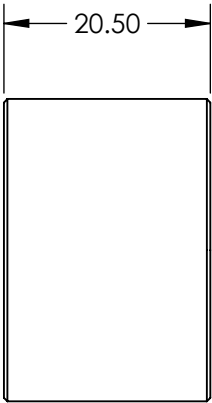
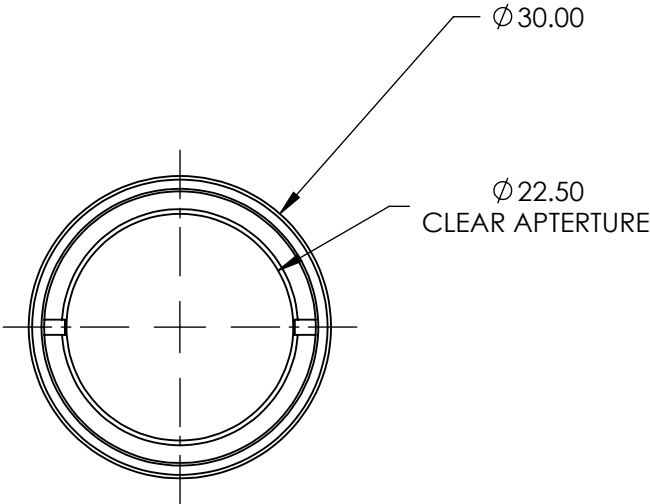
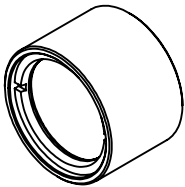


NOTES:

- 1. SUBSTRATE: CaF2 / FUSED SILICA / CaF2
- 2. COATING: UNCOATED
- 3. WAVELENGTH RANGE: 193 - 1000nm



**FOR INFORMATION ONLY:
DO NOT MANUFACTURE
PARTS TO THIS DRAWING**

SPECIFICATIONS SUBJECT TO CHANGE WITHOUT NOTICE DIMENSIONS ARE FOR REFERENCE ONLY

| | | | | |
|---------------------------|---|---|---|-----------------|
| EFL @ 248nm | 90 |  Edmund Optics® | | |
| BFL @ 248nm | 84.76 | | | |
| THIRD ANGLE PROJECTION |  | TITLE | 90mm EFL UNCOATED, UV-TO-NIR CORRECTED TRIPLET | |
| ALL DIMS IN | mm | DWG NO | 47311 | SHEET 1 OF 1 |