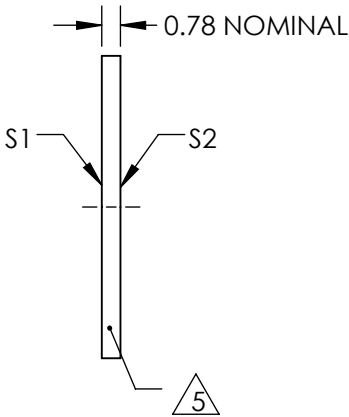
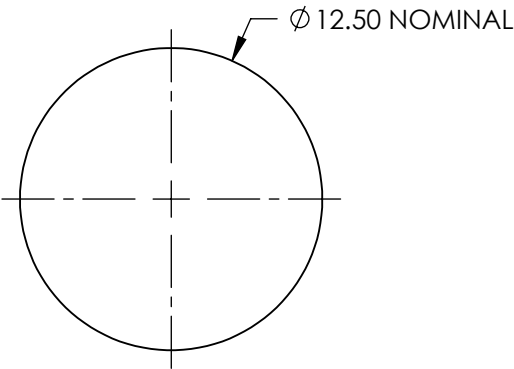
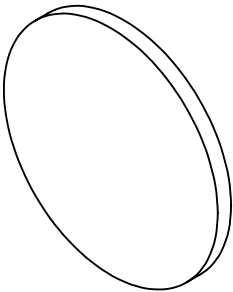


NOTES:

- 1. SUBSTRATE:  
POLYCARBONATE
- 2. OPERATING TEMPERATURE (°C): -30 TO +100 (MAXIMUM OF 240 HOURS)
- 3. DAMAGE THRESHHOLD (PULSED): 0.22 @ 1064nm J/cm² @ 10ns
- 4. TRANSMISSION (%): 85


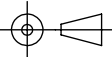
5 EDGES CUT AND SEAMED

- 6. RoHS: COMPLIANT



**FOR INFORMATION ONLY:  
DO NOT MANUFACTURE  
PARTS TO THIS DRAWING**

SPECIFICATIONS SUBJECT TO CHANGE WITHOUT NOTICE  
DIMENSIONS ARE FOR REFERENCE ONLY

	S1	S2	 Edmund Optics®			
SHAPE	PLANO	PLANO		TITLE	40° DIFFUSING ANGLE Ø12.5mm UNMOUNTED HOLOGRAPHIC DIFFUSER	
WAVELENGTH RANGE	400 - 700nm	400 - 700nm		DWG NO	35868	SHEET 1 OF 1
DIFFUSING ANGLE (FWHM)	40 ±4°	40 ±4°				
BEVEL	PROTECTIVE AS NEEDED	PROTECTIVE AS NEEDED		ALL DIMS IN	mm	