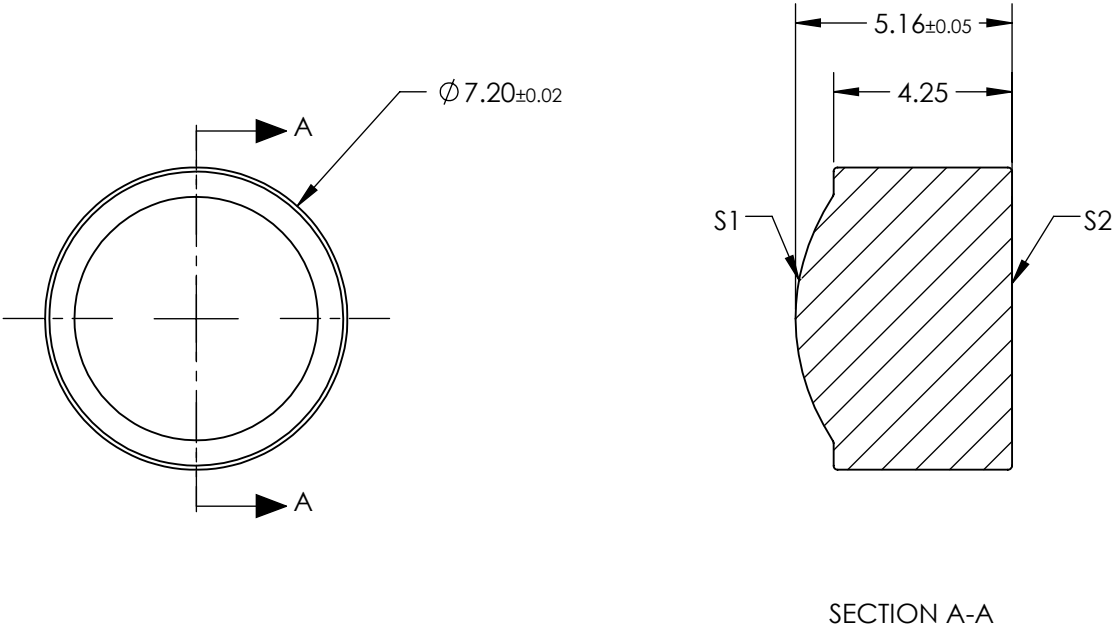



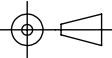
NOTES:

- 1. SUBSTRATE:
D-ZLAF52LA
- 2. NUMERICAL APERTURE: 0.4
- 3. COATING
S1 & S2: R(ABS) < 1.0% @ 1050 - 1600nm
- 4. FOCAL LENGTH TOLERANCE: ±1%
- 5. TRANSMITTED WAVEFRONT ERROR (λ, RMS): < 0.070



**FOR INFORMATION ONLY:
DO NOT MANUFACTURE
PARTS TO THIS DRAWING**

SPECIFICATIONS SUBJECT TO CHANGE WITHOUT NOTICE DIMENSIONS ARE FOR REFERENCE ONLY

	S1	S2	EFL	6.24	 Edmund Optics®		
			BFL	3.46			
SHAPE	CONVEX	PLANO	THIRD ANGLE PROJECTION 	TITLE	0.40 NA 6.24mm FL 1050-1600nm AR COATED, MOLDED ASPHERIC LENS		
SURFACE QUALITY	40-20	40-20					
CLEAR APERTURE	Ø5.00	Ø5.00					
BEVEL MAX	PROTECTIVE AS NEEDED	PROTECTIVE AS NEEDED	ALL DIMS IN	mm	DWG NO	87127	SHEET 1 OF 1