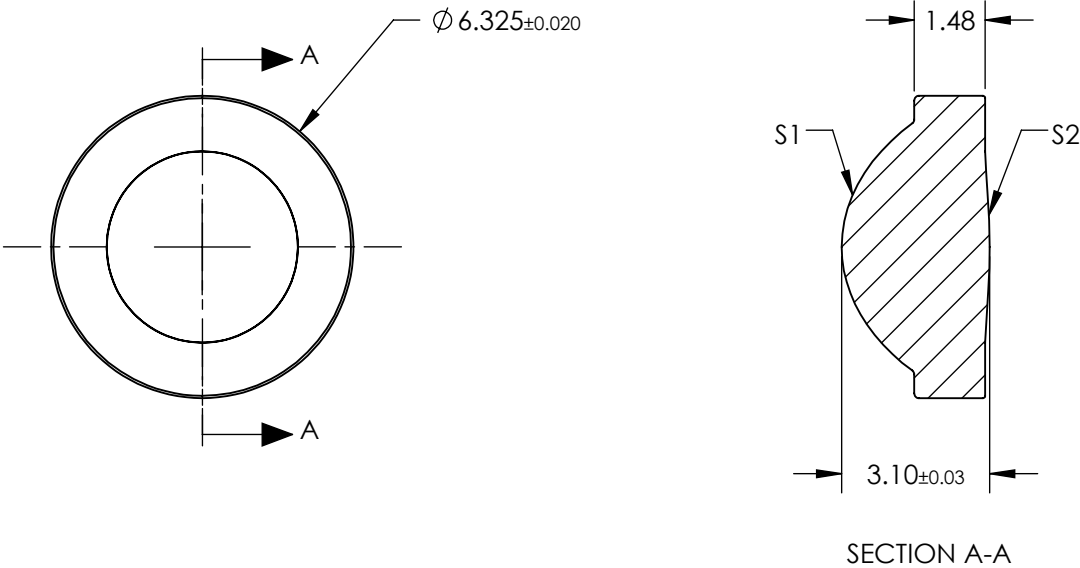


NOTES:


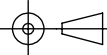
- 1. SUBSTRATE:  
D-ZK3
- 2. NUMERICAL APERTURE: 0.64
- 3. COATING  
S1 & S2: R(AVG) ≤ 0.5% @ 350 - 700nm
- 4. FOCAL LENGTH TOLERANCE: ±1%
- 5. TRANSMITTED WAVEFRONT ERROR (λ, RMS): < 0.080



**FOR INFORMATION ONLY:**  
**DO NOT MANUFACTURE**  
**PARTS TO THIS DRAWING**

SPECIFICATIONS SUBJECT TO CHANGE WITHOUT NOTICE DIMENSIONS ARE FOR REFERENCE ONLY

	S1	S2
SHAPE	CONVEX	CONVEX
SURFACE QUALITY	40-20	40-20
CLEAR APERTURE	Ø5.10	Ø5.10
BEVEL MAX	PROTECTIVE AS NEEDED	PROTECTIVE AS NEEDED

EFL	4.03	 <b>Edmund Optics®</b>		
BFL	2.68			
THIRD ANGLE PROJECTION 	TITLE	0.64 NA 4.03mm FL 350-700nm AR COATED, MOLDED ASPHERIC LENS		
ALL DIMS IN mm	DWG NO	87161	SHEET 1 OF 1	