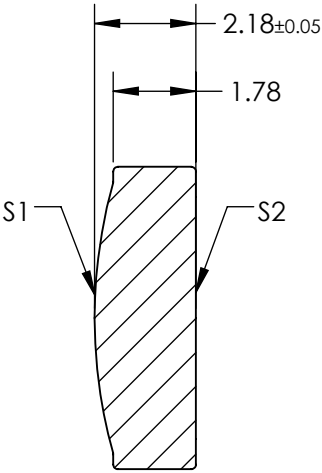
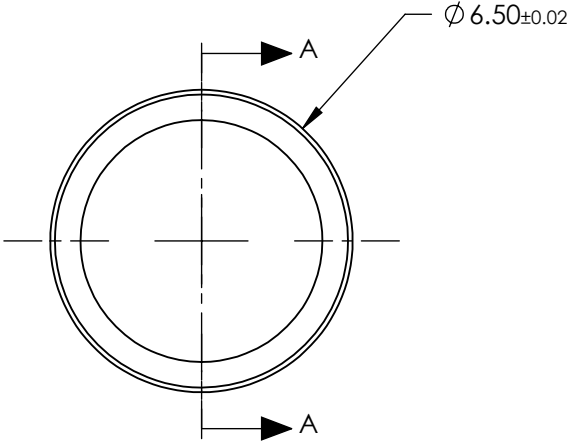


NOTES:

- 1. SUBSTRATE:
D-ZK3
- 2. NUMERICAL APERTURE: 0.15
- 3. COATING
S1 & S2: R(AVG) ≤ 0.5% @ 350 - 700nm
- 4. FOCAL LENGTH TOLERANCE: ±1%
- 5. TRANSMITTED WAVEFRONT ERROR (λ, RMS): < 0.090


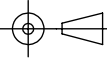


SECTION A-A

**FOR INFORMATION ONLY:
DO NOT MANUFACTURE
PARTS TO THIS DRAWING**

SPECIFICATIONS SUBJECT TO CHANGE WITHOUT NOTICE DIMENSIONS ARE FOR REFERENCE ONLY

	S1	S2
SHAPE	CONVEX	PLANO
SURFACE QUALITY	40-20	40-20
CLEAR APERTURE	Ø5.50	Ø5.50
BEVEL MAX	PROTECTIVE AS NEEDED	PROTECTIVE AS NEEDED

EFL	18.40	 Edmund Optics®		
BFL	17.11			
THIRD ANGLE PROJECTION 	TITLE	0.15 NA 18.40mm FL 350-700nm AR COATED, MOLDED ASPHERIC LENS		
ALL DIMS IN	mm	DWG NO	87113	SHEET 1 OF 1