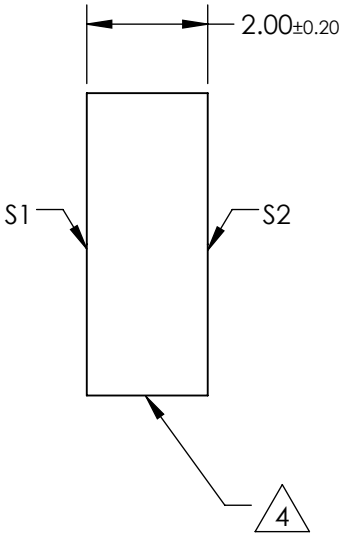
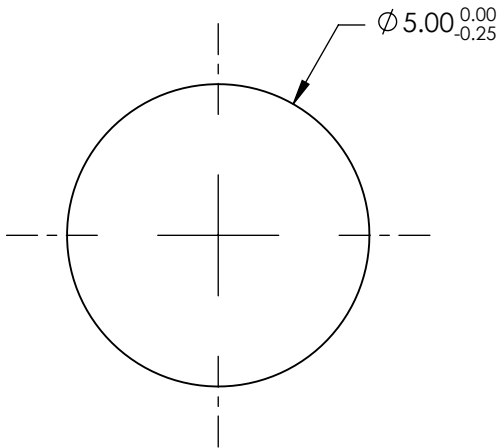
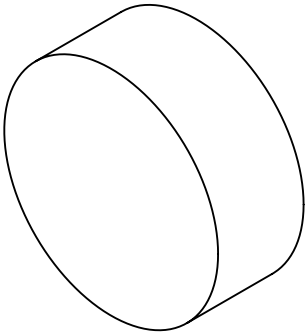


NOTES:

- 1. SUBSTRATE:  
N-BK7
- 2. S2 TO BE PARALLEL WITH S1 TO <1 arcmin
- 3. COATING (APPLY ACROSS CLEAR APERTURE)  
S1 & S2: RABS <0.25% @ 980nm

4. FINE GRIND SURFACE

5. RoHS COMPLIANT



**FOR INFORMATION ONLY:  
DO NOT MANUFACTURE  
PARTS TO THIS DRAWING**

SPECIFICATIONS SUBJECT TO CHANGE WITHOUT NOTICE  
DIMENSIONS ARE FOR REFERENCE ONLY

**Edmund Optics®**

|                 |                      |                      |                           |  |        |   |  |
|-----------------|----------------------|----------------------|---------------------------|--|--------|---|--|
|                 | S1                   | S2                   | THIRD ANGLE<br>PROJECTION |  | TITLE  | 5mm DIAMETER, 980nm V-COAT, λ/4 N-BK7<br>WINDOW |  |
| SHAPE           | PLANO                | PLANO                |                           |  |        |   |  |
| SURFACE QUALITY | 60-40                | 60-40                | ALL DIMS IN               |  | DWG NO | 83515   |  |
| BEVEL           | PROTECTIVE AS NEEDED | PROTECTIVE AS NEEDED |                           |  |        | SHEET<br>1 OF 1                                 |  |