

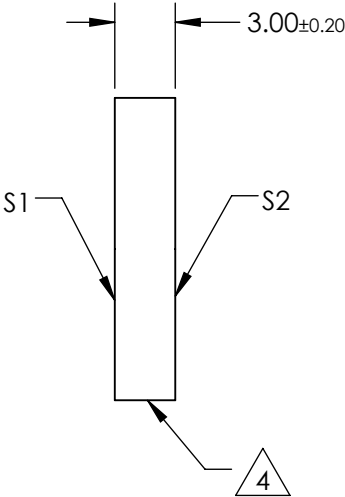
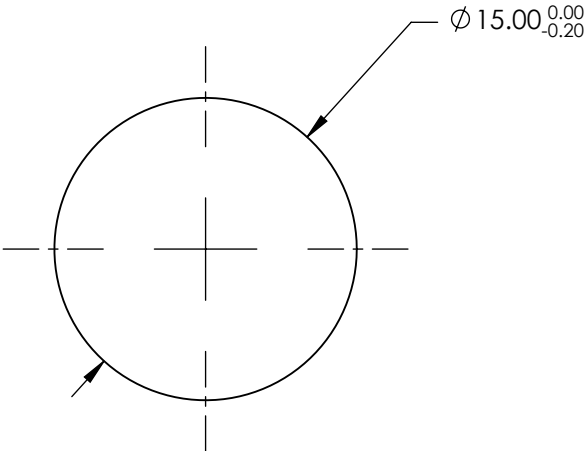
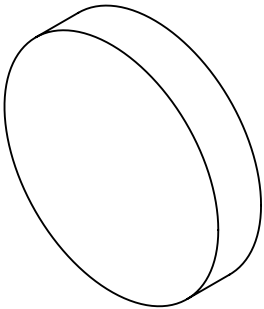
NOTES:

- 1. SUBSTRATE MATERIAL: Fused Silica
- 2. SURFACE S2 TO BE PARALLEL WITH S1 TO 30 arcsec
- 3. COATING (APPLY ACROSS CLEAR APERTURE)

S1: UV Enhanced Aluminum
R(avg) >89% @ 250 - 450nm
R(avg) >85% @ 250 - 700nm
S2: NONE

4. FINE GRIND SURFACE

5. RoHS COMPLIANT



**FOR INFORMATION ONLY:
DO NOT MANUFACTURE
PARTS TO THIS DRAWING**

SPECIFICATIONS SUBJECT TO CHANGE WITHOUT NOTICE
DIMENSIONS ARE FOR REFERENCE ONLY

Edmund Optics®

REV. A	S1	S2	THIRD ANGLE PROJECTION		TITLE	15mm Diameter UV Enhanced Aluminum Coated, λ/10 Mirror	
SURFACE QUALITY	20-10	COMMERCIAL POLISH	ALL DIMS IN	mm	DWG NO	68311	SHEET 1 OF 1
SURFACE FLATNESS	λ/10	NA					
BEVEL	PROTECTIVE AS NEEDED	PROTECTIVE AS NEEDED					