

NOTES:

1. SUBSTRATE MATERIAL: BOROFLOAT®

2. COATING (APPLY ACROSS CLEAR APERTURE)

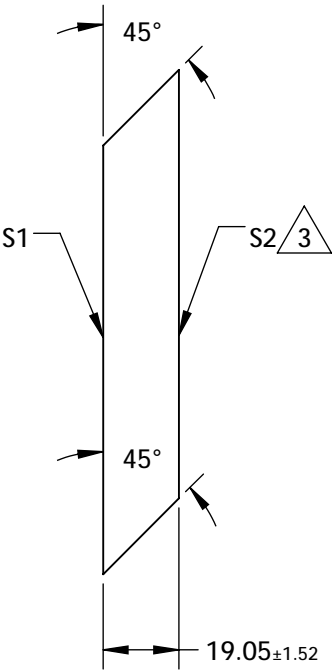
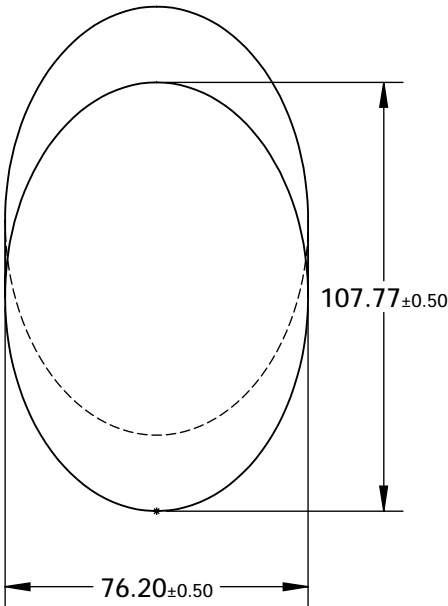
S1: R(AVG) >85% @ 400 - 700nm

R(AVG) >90% @ 400 - 2000nm

S2: NONE

3. FINE GRIND SURFACE

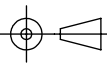

4. RoHS COMPLIANT



**FOR INFORMATION ONLY:  
DO NOT MANUFACTURE  
PARTS TO THIS DRAWING**

SPECIFICATIONS SUBJECT TO CHANGE WITHOUT NOTICE  
DIMENSIONS ARE FOR REFERENCE ONLY

	S1	S2
TYPE	PLANO	PLANO
CLEAR APERTURE (mm)	97.00 x 68.58	N/A
SURFACE QUALITY	60-40	N/A
SURFACE FLATNESS	$\lambda/8$	N/A
BEVEL	PROTECTIVE AS NEEDED	PROTECTIVE AS NEEDED

THIRD ANGLE PROJECTION 			
TITLE		76.2mm, MINOR AXIS PROTECTED ALUM. ELLIPTICAL MIRROR	
ALL DIMS IN	mm	DWG NO	42584
		SHEET 1 OF 1	