

**FOR INFORMATION ONLY:
DO NOT MANUFACTURE
PARTS TO THIS DRAWING**

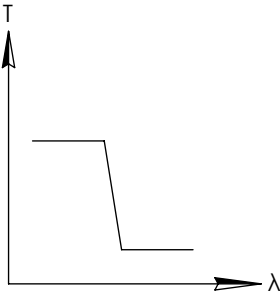
NOTES:

- SUBSTRATE
- SURFACE S2 TO BE PARALLEL WITH SURFACE S1 TO WITHIN 5 arcsec
- COATING (APPLY ACROSS COATING APERTURE)
ENVIRONMENTAL DURABILITY:
PHYSICAL DURABILITY:
PERFORMANCE SPECIFICATIONS:
T(avg): >85% FROM 495 - 912nm FOR RANDOM POLARIZATION @ 45° AOI
T(abs): 80% FROM 495 - 912nm FOR ALL POLARIZATIONS @ 45° AOI
R(avg): >97% FROM 997 - 1235nm FOR RANDOM POLARIZATION @ 45° AOI
R(abs): 95% FROM 997 - 1235nm FOR ALL POLARIZATIONS @ 45° AOI
T(abs): = 50% 950nm @ 45° AOI

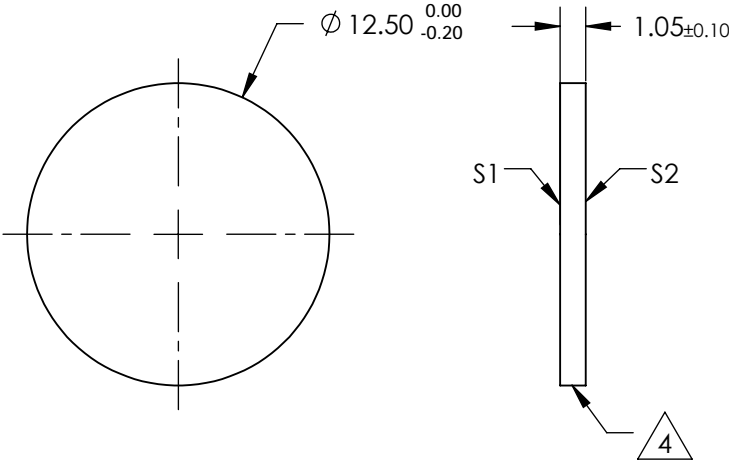
S1: HARD COATED
S2: SINGLE LAYER MgF2

4. FINE GRIND SURFACE

- POWER, IRREGULARITY, AND SURFACE QUALITY SPECIFICATIONS
APPLY ACROSS CLEAR APERTURE
- TRANSMITTED WAVEFRONT DISTORTION RMS@ 632.8nm $\leq \frac{1}{4} \lambda$
- ROHS COMPLIANT



SHORTPASS FILTER



SPECIFICATIONS SUBJECT TO CHANGE WITHOUT NOTICE
DIMENSIONS ARE FOR REFERENCE ONLY

	S1	S2
SHAPE	PLANO	PLANO
SURFACE QUALITY	60-40	60-40
CLEAR APERTURE	Ø11.00	Ø11.00Ø11.00
COATING APERTURE	Ø11.00	Ø11.00
BEVEL	PROTECTIVE AS NEEDED	PROTECTIVE AS NEEDED

Edmund Optics®



ALL DIMS IN

mm

TITLE

Ø12.5mm, 950nm DICHROIC SHORTPASS
FILTER

DWG NO

86676

SHEET
1 OF 1