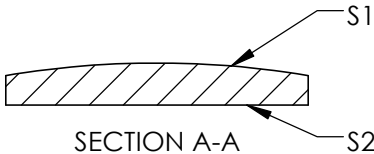
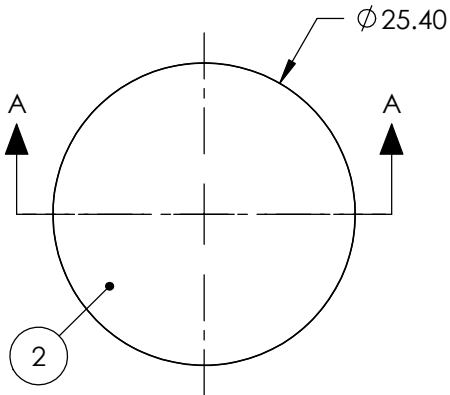
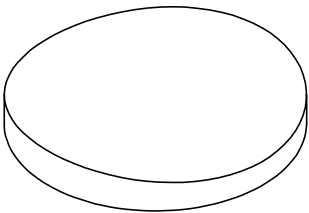



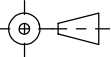
NOTES:

- 1. SUBSTRATE:  
GRADE A FINE ANNEALED
- ②. COATING (APPLY ACROSS COATING APERTURE)  
NONE  
NONE
- 3. CENTERING TOLERANCE (AT 587.6nm):  
PLANO AXIS WEDGE: < 5 ARCMIN  
POWER AXIS WEDGE: < 5 ARCMIN
- △. FINE GRIND SURFACE
- 5. POWER, IRREGULARITY, AND SURFACE QUALITY  
SPECIFICATIONS APPLY ACROSS CLEAR APERTURE
- 6. FOCAL LENGHT (EFL): 150nm  
BACK FOCAL LENGTH (BFL): 147.69nm
- 7. RoHS COMPLIANT



**FOR INFORMATION ONLY:  
DO NOT MANUFACTURE  
PARTS TO THIS DRAWING**

SPECIFICATIONS SUBJECT TO CHANGE WITHOUT NOTICE  
DIMENSIONS ARE FOR REFERENCE ONLY

|                 |  |                      |                      |   |  |              |
|-----------------|--|----------------------|----------------------|---|--|--------------|
|                 |  | S1                   | S2                   |  |  |              |
| SHAPE           |  | CONVEX               | PLANO                |   |  |              |
| SURFACE QUALITY |  | 40 - 20              | 40 - 20              |  |  |              |
| CLEAR APERTURE  |  | Ø22.86               | Ø22.86               |   |  |              |
| BEVEL           |  | PROTECTIVE AS NEEDED | PROTECTIVE AS NEEDED | ALL DIMS IN   | mm   |              |
|                 |  |                      |                      | TITLE   | LENS PCX CYLINDER 25.40mm Dia x 150.00mm EFL |              |
|                 |  |                      |                      | DWG NO  | 34614  | SHEET 1 OF 1 |