

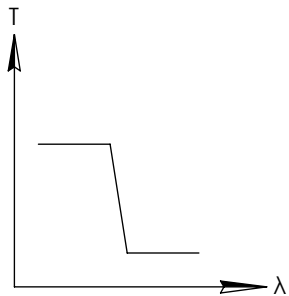
**FOR INFORMATION ONLY:  
DO NOT MANUFACTURE  
PARTS TO THIS DRAWING**

NOTES:

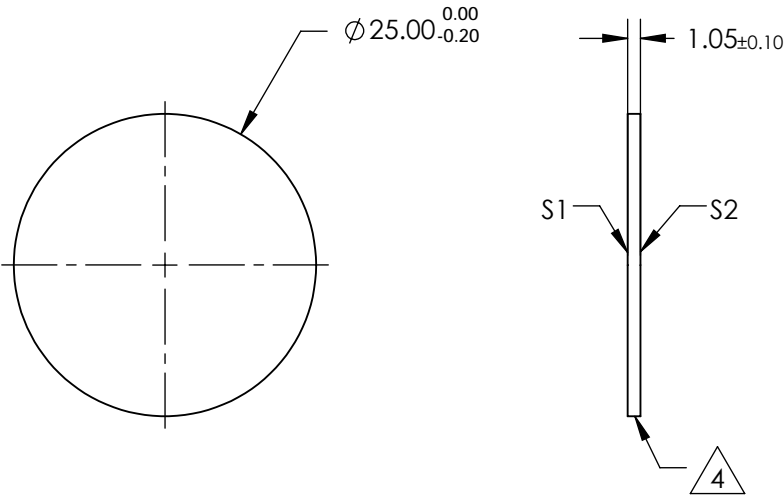
1. SUBSTRATE
2. SURFACE S2 TO BE PARALLEL WITH SURFACE S1 TO WITHIN 5 arcsec
3. COATING (APPLY ACROSS COATING APERTURE)  
ENVIRONMENTAL DURABILITY:  
PHYSICAL DURABILITY:  
PERFORMANCE SPECIFICATIONS:  
T(avg):>85% FROM 400 - 680 nm FOR RANDOM POLARIZATION @ 45° AOI  
T(abs): >80% FROM 400 - 680 nm FOR ALL POLARIZATION @ 45° AOI  
R(avg):>97% FROM 725 - 900 nm FOR RANDOM POLARIZATION @ 45° AOI  
R(abs): >95% FROM 725 - 900 nm FOR ALL POLARIZATION @ 45° AOI  
T(abs): = 50% 700nm @ 45° AOI  
  
S1: HARD COATED  
S2: SINGLE LAYER MgF2

**4.** FINE GRIND SURFACE

5. POWER, IRREGULARITY, AND SURFACE QUALITY SPECIFICATIONS  
APPLY ACROSS CLEAR APERTURE
6. TRANSMITTED WAVEFRONT DISTORTION RMS@ 632.8nm  $\leq \frac{1}{4} \lambda$
7. ROHS COMPLIANT



SHORTPASS FILTER



SPECIFICATIONS SUBJECT TO CHANGE WITHOUT NOTICE  
DIMENSIONS ARE FOR REFERENCE ONLY

	S1	S2
SHAPE	PLANO	PLANO
SURFACE QUALITY	60-40	60-40
CLEAR APERTURE	Ø22.00	Ø22.00
BEVEL	PROTECTIVE AS NEEDED	PROTECTIVE AS NEEDED



ALL DIMS IN

mm

**Edmund Optics®**

TITLE

700nm, 25mm DIAMETER, DICHOIC  
SHORTPASS

DWG NO

69206

SHEET  
1 OF 1