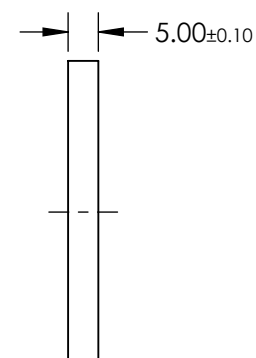
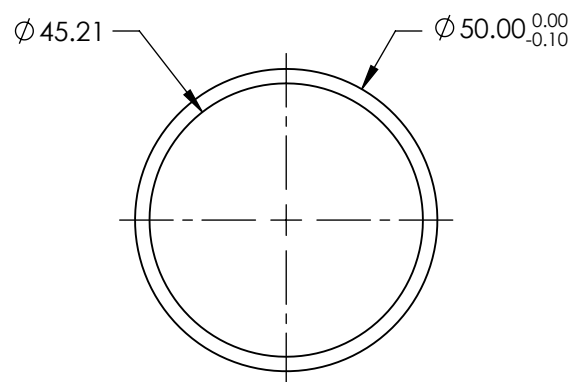
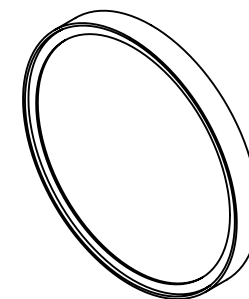


NOTES:

1. CONSTRUCTION: MOUNTED IN BLACK ANODIZED RING
2. COATING (APPLY ACROSS COATING APERTURE)

DURABILITY: MIL-C-48497A
PERFORMANCE SPECIFICATIONS:
CWL: 785
FWHM: 39.2
REFLECTION %: >99
TRANSMISSION %: >90


3. POWER, IRREGULARITY, AND SURFACE QUALITY SPECIFICATIONS APPLY ACROSS CLEAR APERTURE
4. TRANSMITTED WAVEFRONT DISTORTION RMS@ $<1\lambda$
5. ROHS COMPLIANT



**FOR INFORMATION ONLY:
DO NOT MANUFACTURE
PARTS TO THIS DRAWING**

SPECIFICATIONS SUBJECT TO CHANGE WITHOUT NOTICE
DIMENSIONS ARE FOR REFERENCE ONLY



	S1	S2	THIRD ANGLE PROJECTION 		TITLE OD4, Ø50mm, 785nm, NOTCH FILTER		
SHAPE	PLANO	PLANO					
SURFACE QUALITY	60-40	60-40					
CLEAR APERTURE	Ø45.21	Ø45.21	ALL DIMS IN	mm	DWG NO	67130	SHEET 1 OF 1