

NOTES:

1. CONSTRUCTION: MOUNTED IN BLACK ANODIZED RING
2. COATING (APPLY ACROSS COATING APERTURE)

DURABILITY: MIL-C-48497A

PERFORMANCE SPECIFICATIONS:

CWL: 632.8

FWHM: 31.6

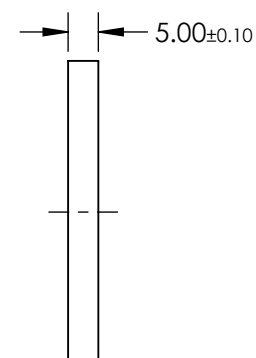
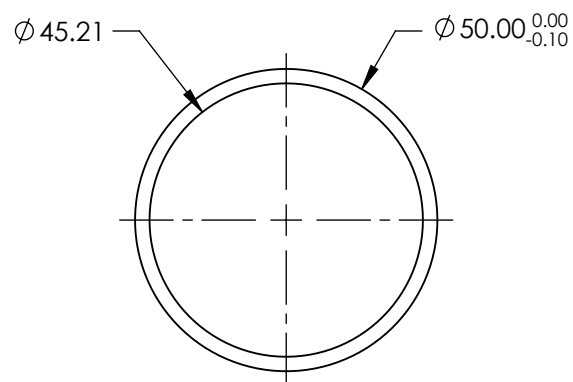
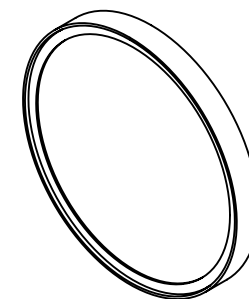
REFLECTION %: >99

TRANSMISSION %: >90

- ### 3. POWER, IRREGULARITY, AND SURFACE QUALITY SPECIFICATIONS APPLY ACROSS CLEAR APERTURE

- #### 4. TRANSMITTED WAVEFRONT DISTORTION RMS@ $<1\lambda$


- ## 5. ROHS COMPLIANT



FOR INFORMATION ONLY:
DO NOT MANUFACTURE
PARTS TO THIS DRAWING

SPECIFICATIONS SUBJECT TO CHANGE WITHOUT NOTICE
DIMENSIONS ARE FOR REFERENCE ONLY



	S1	S2	THIRD ANGLE PROJECTION 		TITLE	OD4, Ø50mm, 632.8nm, NOTCH FILTER	
SHAPE	PLANO	PLANO			TITLE		
SURFACE QUALITY	60-40	60-40			TITLE		
CLEAR APERTURE	Ø45.21	Ø45.21	ALL DIMS IN	mm	DWG NO	67129	SHEET 1 OF 1