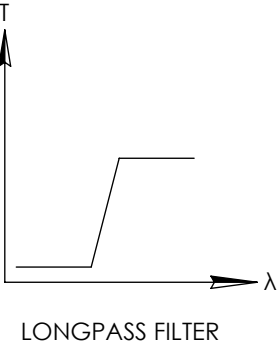
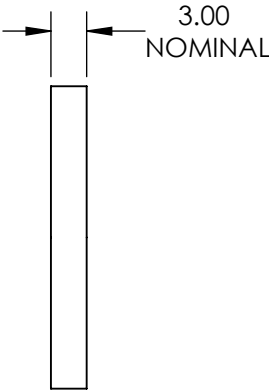
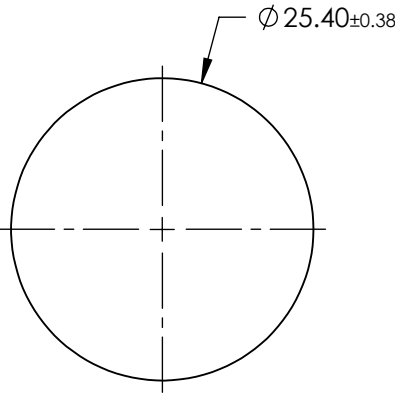
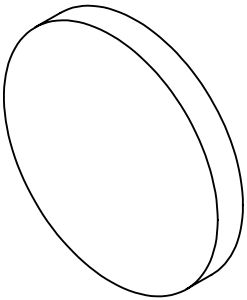


FOR INFORMATION ONLY:
DO NOT MANUFACTURE
PARTS TO THIS DRAWING



SPECIFICATIONS SUBJECT TO CHANGE WITHOUT NOTICE
DIMENSIONS ARE FOR REFERENCE ONLY

| REV. 001 | S1 | S2 |
|--------------------------------------|----------------------|----------------------|
| SHAPE | PLANO | PLANO |
| SPECTRAL TRANSMITTANCE $t_p(\%)$ | 92 | 92 |
| PASSBAND LIMIT 1 λ_{p1} (nm) | 560 | 560 |
| CUT-OFF POSITION λ_c (nm) | 495±6 | 495±6 |
| STOPBAND LIMIT λ_s (nm) | 430 | 430 |
| WAVELENGTH | VIS | VIS |
| BEVEL | PROTECTIVE AS NEEDED | PROTECTIVE AS NEEDED |

Edmund Optics®



ALL DIMS IN

mm

TITLE

Ø25.4mm, SCHOTT GG-495 LONGPASS FILTER

DWG NO

32753

SHEET
1 OF 1